



FLEISCHHACKER



# Product PORTFOLIO

Medical and laboratory technology



# Looking for international competence?

## EXPERIENCE IN MEDICAL PROJECTS



In 1996 Fleischhacker started its first international contract with WHO Geneva and delivered aid packages and kits worldwide. Within 3 years we became a strong partner for international NGOs and won our first bank-financed project to equip hospitals in the Philippines with medical equipment. In 2001 we were successfully involved in the Vietnam KfW projects and delivered, installed and maintained in total 12 complete Level 3 Hospitals. These projects sparked the development of our department for technical service and maintenance.

Starting in 2003, a completely new approach has been developed together with the Department of Peace Keeping Operations of the United Nations in New York. This contract supported 2 different purposes: The Strategic Deployment Stock for the Department of Field Support in case of emergencies and the ongoing service to the 21 missions worldwide. Deliveries of Strategic Deployment Stocks in case of emergencies require the capability to handle large volume transactions for difficult to reach destinations in extremely short time frames. In emergencies, shipments of complete clinics have been dispatched in a matter of days to destinations like Somalia, CAR or Sudan. "Normal" deliveries to all active missions are a comparatively easy task.

The modular hospital structure with fully integrated service solutions (including item lists, budgets, detailed specifications, an electronic procurement platform, training program, technical service, spare parts and consumables lists) is still unique. So, we oversee the installation until we know that you have complete and workable solutions / modules.

During Covid we delivered mobile labs and mobile solutions for vaccination to several destinations with difficult surroundings. We are proud that we have contributed a considerable portion to today's well-established solutions of inventory management and technical services, which includes training, installation and the electronic procurement system.

*Difficult situations challenge us – our strength lies in mastering them.*

Last but not least, the modular structure was a major step forward to facilitate planning and actual creation of missions: Instead of re-inventing the wheel every time a mission was established, modules were used as building blocks. One major benefit was the scalable design (e.g. emergency room, ICU) so that modules could be combined for entirely different scopes of operation.



## SERVICE & INSTALLATION



As one of the first medical supply companies, Fleischhacker offered and successfully carried out complex projects including training, installation, maintenance and repairs as early as the 1990s. Over the decades, we have consistently expanded this area internally as well as created partnerships with various partners. Especially in the last years we were able to successfully implement projects in difficult destinations despite the pandemic and worldwide political situations. Fleischhacker undertook several significant projects that underscore our expertise and capabilities.

We managed the implementation of nine hospitals in Iraq, where we successfully integrated and set up around 70 different medical devices, covering a range from ECG machines to X-ray equipment.

In Iran, Fleischhacker provided crucial technical services, handling intricate and demanding medical equipment including CT scanners, X-ray machines, ultrasounds, and mobile hospitals.

Another notable endeavor was a recall campaign conducted in Ukraine, addressing autoclaves across nearly 30 sites, including those situated in frontline areas.

Simultaneously, Fleischhacker executed extensive installation and training programs across 70 locations in Ukraine, encompassing frontline territories.



## QUALITY MANAGEMENT



Quality management is an integral component within our ERP system, mirroring the meticulous processes akin to the approved product list in the pharmaceutical industry.

Our approach entails a stringent approval process, ensuring all requisite documents for each product class are readily available and duly validated.

We've curated a core range of products aimed at expediting delivery and ensuring consistent product quality.

These selections serve as reliable options for prompt fulfillment whenever viable, and for delivering reliable and high-quality products.

Maintaining stock is pivotal to our operations and so, we regularly update our customers on inventory availability.

Moreover, we extend the option to expand or elevate inventory levels through potential contracts with our clients, ensuring a seamless supply chain.

## FREIGHT SERVICES



Within the past 25 years of supporting NGOs, we have developed a worldwide network of freight forwarders and are able to deliver DAP to most countries worldwide. For example, during COVID we delivered PPE kits to all UN Missions incl. Somalia, Afghanistan and Sudan.

In early 2022 when the infrastructure was not available, we managed to deliver around 30 Containers of relief items to Ukraine for UNHCR projects. Furthermore, we shipped 50 trucks and 28 Containers to Teheran when the country was in a state of exception due to the political situation in the 4th quarter of 2022.

This year we managed deliveries to Tashkent by land transport for trucks, cooling and dangerous goods.



Founded in **1996**

€ **100** million turnover

DIN EN **9001** certified since 1997 (TÜV)

**13,500** m<sup>2</sup> of warehouse space in Schwerte

**180** employees in Germany

**90** employees in Singapore and Indonesia

## CERTIFICATIONS

### GERMANY

- › Certified QMS: ISO9001:2015 (TüV Rheinland, Germany)
- › Certified QMS: ISO13485:2016 (DGS, Germany)
- › Certified Licensed Shipper: 185/2010 A11.2.3.9 (Federal Office of Civil Aeronautics, Germany)
- › Certified Licensed Exporter: DE/8100/ZA/2143 (Customs Authorities Dortmund, Germany)
- › Approved Atlas Export / EORI: DE2733073 (Customs Authorities Dortmund, Germany)
- › Certification “Safe Aeronautics”: Personalized Certificates (Federal Office of Civil Aeronautics)
- › Certification “Hazardous Goods”: Personalized Certificates (GE-LO Hamburg, Germany)
- › Accredited MTK – Med. Technical Control Service acc. to Medical Product Act: MPG and MPBetreibV §11, Abs.5 (District Authorities Arnsberg, Germany)
- › Licensed Wholesaler/Trader Medicine, Human Medicine: §52 AMG (District Authorities Arnsberg, Germany)
- › Active Level Membership United Nations Global Compact (UNGC)
- › EcoVadis Certificate CSR Sustainability Rating
- › Certified ISMS ISO27001:2013 (TüV Rheinland)
- › Certified according to EU MDR 2017/745

## CERTIFICATIONS

### SINGAPORE

- › Certified QMS: ISO9001:2015 (TüV Süd, Singapore)
- › Certified QMS: ISO13485:2016 (DGS, Germany; certification of development process with Germany)
- › Licensed wholesaler/trader Pharmaceuticals: Importer License Therapeutic Products (Health Sciences Authority, Singapore)
- › Licensed wholesaler/trader: Importer License Medical Devices (Health Sciences Authority, Singapore)
- › Certified QMS: BizSafe Level 3 (Workplace Safety & Health Council, Singapore)
- › WHO approved pharmaceutical supplier



FLEISCHHACKER



# TABLE OF CONTENTS

1	INJECTION / INFUSION	11
2	BANDAGES	17
3	RESUSCITATION	23
4	RESCUE BAGS	33
5	KITS	41
6	WESTMED® ITEMS	53
7	MEDICAL DEVICES	61
8	FURNITURE	69
9	RELIEF ITEMS	75
10	PPE	79
11	MEDICINE	89
12	MOBILE SOLUTIONS	99





Chapter 1

# INJECTION INFUSION

SYRINGES  
CANNULAS  
INFUSION DEVICES/CUTLERY  
INFUSION/INJECTION ACCESSORIES  
VASCULAR ACCESS SYSTEM  
DISPOSAL

## SYRINGES

### INJEKT® SOLO DISPOSABLE SYRINGE, 100 pcs

2 mL

Item Code: 5930001

5 mL

Item Code: 5930002

10 mL

Item Code: 5930003

20 mL

Item Code: 5930004



### SYRINGE WITH CANNULA

0.2 mL, 23 G

Item Code: 7701288

### SYRINGE WITH CANNULA

0.5 mL, 23 G

Item Code: 7701295



## CANNULAS

### STERICAN® STANDARD CANNULA, 100 pcs

Size 1, 20 G, 0.90 x 40 mm, yellow

Item Code: 5930005

Size 2, 21 G, 0.80 x 40 mm, green

Item Code: 5930006

Size 12, 22 G, 0.70 x 30 mm, black

Item Code: 5930007

Size 14, 23 G, 0.60 x 30 mm, blue

Item Code: 5930008

Size 16, 23 G, 0.60 x 25 mm, blue

Item Code: 5930009

Size 17, 24 G, 0.55 x 25 mm, purple

Item Code: 5930010

Size 18, 26 G, 0.45 x 25 mm, brown

Item Code: 5930011

Single use standard needle

- For intramuscular, subcutaneous, intravenous and intra-arterial injections
- In accordance with ISO 7864
- Thin-walled needles
- Made of stainless, chromium-nickel steel
- Extremely smooth surface with light silicone coating
- 3-facet - long bevel
- For minimal pain upon puncture
- Transparent Luer-Lock plastic hub
- Made of PP
- Color-coded hub conforms to ISO 6009
- Single sterile packing
- Dispenser boxes containing 100 needles

### STERICAN® SPECIAL CANNULA, 100 pcs

19 G, 1.10 x 50 mm, ivory

Item Code: 5930020

21 G, 0.80 x 80 mm, green

Item Code: 7039872

23 G, 0.60 x 80 mm, blue

Item Code: 5930126

25 G, 0.50 x 25 mm, orange

Item Code: 5930100

27 G, 0.40 x 12 mm, grey

Item Code: 5930036





## CANNULA

18 G, 1.30 x 45 mm, green  
Item Code: 7119566



## IV CANNULA, short, sterile

16 G, 1.70 x 45 mm, grey  
Item Code: 7119570

22 G, 0.90 x 25 mm, blue  
Item Code: 7119559



## VASOFIX® BRAUNÜLE® CANNULA IV

14 G, 2.20 x 50 mm, orange  
Item Code: 5930075

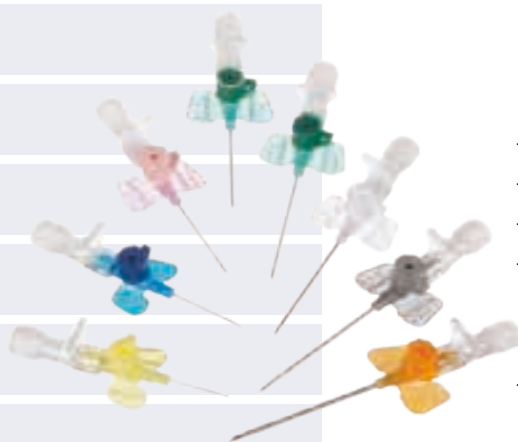
16 G, 1.70 x 50 mm, grey  
Item Code: 5930074

17 G, 1.50 x 45 mm, white  
Item Code: 5930073

18 G, 1.30 x 45 mm, green  
Item Code: 5930072

20 G, 1.10 x 33 mm, pink  
Item Code: 5930071

22 G, 0.90 x 25 mm, blue  
Item Code: 5930070



Conventional IV catheter with injection Port in FEP material.

- Latex-free
- PVC-free
- ISO-Standard 10.555-1/5
- Allows injections without an extra needle or risk of needles tick injuries among each other
- Sharp backcut bevel for minimal puncture trauma

## BLOOD COLLECTION KIT

Item Code: 7700905

Contains:

- Compress, gauze, antiseptic, 6 x 3 cm
- Tube, vacuum, EDTA, 4 mL
- Needle holder, vacuum tubes
- 2x Gloves, lab, powderless, medium, nitrile
- Compress, gauze, 10 x 10 cm, non-sterile
- Needle, vacuum tube, 20 G
- Tape, Zinc-oxide 2.5 cm
- Bandage, elastic 6 cm x 5 m
- Tourniquet



## INFUSION DEVICES/CUTLERY

### INFUSION SET, single use, sterile

Item Code: 7185555

Contains:

- Filter
- Ventilation valve
- Cannula 21 G x 1 1/2
- Luer connector
- Transparent tube 150 cm
- Latex-free injection port
- Individually packed



## INFUSION/INJECTION ACCESSORIES

### CBC-VECOS® VENOUS TOURNIQUET, disposable

Item Code: 17185430



### COMBINATION PLUGS, 100 pcs

Red

Item Code: 7020753



### CLEAN-COMFORT ALCOHOL SWABS, 100 pcs

6.5 x 3 cm

Item Code: 5000440



### 3-WAY STOPCOCK

Blue

Item Code: 5590302



### WESTMED® PRESSURE INFUSION CUFF, 500 mL

Item Code: 5810000

Our WESTMED® pressure infusion cuff is used for pressure-supported infusion and transfusion. The cuff is suitable for infusion liquids and equipped with a precision manometer and pump ball. The manometer has a scale from 0 to 300 mmHg and pressure can be regulated using the valve on the pump ball.

- For 500 mL transfusion and infusion bags
- With manometer and suspension device
- Scaling 0 - 300 mmHg



## VASCULAR ACCESS SYSTEM

### ARROW® EZ-IO® G3 INTRAOSSEOUS VASCULAR ACCESS SYSTEM

Brown

Item Code: 7313051

### EZ-IO® INTRAOSSEOUS NEEDLE SET

15 mm, 15 GA

Item Code: 7756079

25 mm, 15 GA

Item Code: 7756080

45 mm, 15 GA

Item Code: 7756081

### BAG, YELLOW SOFT CASE WITH HOLDER FOR EZ-IO DRILL G3

Item Code: 7768591



## DISPOSAL

### MEDIBOX®

800 mL

Item Code: 5931030

2.4 L

Item Code: 7325340

4.7 L

Item Code: 7324383

5.7 L

Item Code: 7325341



For easy and safe disposal of all kinds of medical sharps

- Impact and puncture resistant
- No-touch, twist-off and insertion inlets for all kinds of used needles, cannulae, scalpel blades and medical sharps
- Overfill warning by maximum fill line and visible content level
- Medibox® sharps containers are complying with international standards
- Made of PP

### CANNULA DISPOSAL BOX, cardboard made

5 L

Item Code: 7116627









Chapter 2

---

# BANDAGES

GAUZE  
GAUZE BANDAGES  
COMPRESSION  
ALUMINUM BANDAGES  
PADDING  
FIXATION  
TAPE  
OTHER

## GAUZE

### GAUZE COMPRESS, 8-ply, sterile, 50 pcs

5 cm x 5 cm

Item Code: 7108715

7.5 cm x 7.5 cm

Item Code: 7081569

10 cm x 10 cm

Item Code: 5820050



The swabs with inside folded cut selvedge are made of gauze complying with standard EN 14079 type 17.

- Packed with their folded side up in the sterile pouch
- 50 sterile pouches, each containing 2 gauze swabs

## GAUZE BANDAGES

### ELASTOMULL® GAUZE BANDAGES, 20 pcs

4 cm x 4 m

Item Code: 5936009

8 cm x 4 m

Item Code: 5936007

10 cm x 4 m

Item Code: 5936011

12 cm x 4 m

Item Code: 5936037



Elastomull® is a highly elastic bandage which is slip and crease-resistant.

- High natural fibre content for moisture absorption
- Excellent elasticity
- Rapid application

## COMPRESSION

### HARTMANN IDEAL BANDAGES, 10 pcs

6 cm x 5 m

Item Code: 7048675

8 cm x 5 m

Item Code: 5932865

10 cm x 5 m

Item Code: 7048562



The Hartmann Ideal Bandage is a classic bandage made of 100% cotton, with looped edges to ensure textile elasticity of approx. 90 %.

- Washable at 95 °C and sterilizable (steam A at 134 °C)
- Washing the bandages restores the elasticity lost during wear

## ALUMINUM BANDAGES

---

### ALUDERM® COMPRESS, sterile

7.5 x 7.5 cm

Item Code: 7011288

10 x 15 cm

Item Code: 5065447

20 x 20 cm

Item Code: 5065448



aluderm® with aluminium-vaporized wound dressing is ideally suited for all superficial wounds and injuries, superficial burns, abrasions, lacerations and cuts.

- Extraordinarily soft and supple
- Dressing material: very strong absorbent layer (absorbency 1,400 g/ m<sup>2</sup>) and hydrophobic PP final layer

## PADDING

---

### ROLTA® SOFT PLASTER BANDAGES/PADDING

non-sterile, individually banded

6 cm x 3 m, 50 pcs

Item Code: 4426326

10 cm x 3 m, 30 pcs

Item Code: 7020471



Hartmann Rolta® Soft is a synthetic padding bandage made of crinkled polyester threads designed for perfect padding.

- Padding material under plaster casts and tubular bandages
- Support and compression bandages
- For the padding of splints

## FIXATION

### PEHA-CREPP® FIXATION BANDAGES, 20 pcs

4 cm x 4 m

Item Code: 5932410

6 cm x 4 m

Item Code: 5932411

8 cm x 4 m

Item Code: 5932412

10 cm x 4 m

Item Code: 5932413



- For fixation of all kinds
- Suitable for patients with sensitive skin

### NOBAFIX® ELASTIC GAUZE BANDAGES, 20 pcs

4 cm x 4 m

Item Code: 7108728

6 cm x 4 m

Item Code: 7108729

8 cm x 4 m

Item Code: 7108730

10 cm x 4 m

Item Code: 7108731

12 cm x 4 m

Item Code: 7100787



Nobafix® is an elastic fixation bandage with a particularly fine, smooth and dense structure due to its weaving technique.

- Material: 41% Raxon, 59% Polyamide
- Used for modelling and fixation of plaster splints
- Fixation of wound dressings
- Individually wrapped in foil

## TAPE

### RUDAPLAST® FIXATION PLASTER

white, without protective ring

1.25 cm x 5 m, 10 pcs

Item Code: 7108501

2.50 cm x 5 m, 10 pcs

Item Code: 7108503

2.50 cm x 5 m, each

Item Code: 7731389



The white fixation tape is made of textile fabric which is coated with a zinc oxide adhesive. Its adhesive strength is excellent. RUDAPLAST® fixation tape is rolled up and equipped with plastic discs on both sides. It is suited for the fixation of wound pads, bandage dressings, tubes and catheters.



## OTHER

### CELLONA® PLASTER BANDAGES, 10 pcs

10 cm x 3 m

Item Code: 5939050



### ALCOHOL SWAB 70% ISOPROPYL

Item Code: 17089223



### TRIANGULAR CLOTH

non-woven carrier, white, non-sterile

96 x 96 x 136 cm

Item Code: 7025711



Snug-fitting Söhngen® triangular cloth V for fixation, padding or as a support for arm injuries.

- Made of soft PP fleece.
- Basic component, and therefore also ideal for refilling first aid kits, first aid boxes and cabinets.
- Washable, therefore reusable

### YPSISAVE® DRESSING CLOTH

white, sterile

40 x 60 cm

Item Code: 7001799

60 x 80 cm

Item Code: 7006404

80 x 120 cm

Item Code: 7017983



Dressing cloth YPSISAVE from Holthaus medical is ideally suited for somewhat larger wounds. The dressing cloth is made of non-woven fabric and is used to cover injuries quickly, safely and without germs. The YPSISAVE dressing cloth is particularly recommended for first aid. YPSISAVE is a disposable product which must be disposed of after use.

- Air-permeable
- Individually sterile packed





Chapter 3

# RESUSCITATION

SUCTION UNITS  
VENTILATION  
OXYGEN SUPPLY  
INTUBATION  
OTHER  
IMMOBILISATION



## SUCTION UNITS

### SUCTION PUMP LSU 4000 with disposable SERRES® canister

Item Code: 7153249

The LSU is lightweight, portable and easy to operate – even when wearing gloves. It is splash proof and safe to use in combination with defibrillators.



- One-hand-grip design
- Visual Support
- LED display for use day or night
- Easy conversion between canister systems
- Battery runtime app. 45 minutes
- Weight: 4 kg including battery
- Vacuum reach of 500+ mmHg and flow rate of >25 LPM

### SUCTION PUMP LCSU 4

Item Code: 7149839

Laerdal's LCSU® 4 suction unit combines rugged design with lightweight portability, an essential tool for every first responder.

- Click-in-place 300 mL canister, no vacuum tube needed
- Easy to convert between 300 mL and 800 mL canister version
- Internal integrated filter systems for all canisters
- LED display for use day or night
- Rechargeable Battery, NiMH 12 volt 1.6 Ah. with 45 minutes run time



## V-VAC MANUAL SUCTION PUMP

### Starter Set

Item Code : 5666018

The V-VAC manual suction unit is lightweight and small enough to fit in EMS bags, or first aid kits, and is ready to go when you are.

- One-hand operation
- Vacuum range: 170 - 380 mmHg (23-51 kPa)
- Peak flow rate: 70 L/minute
- Cartridge capacity: 425 mL canister
- Weight: 292 g



## AEROSUC® MANUAL SUCTION PUMP

Item Code: 7151488

The manually powered suction device for oropharyngeal suction pump is developed for quick use, energy-independent and maintenance-free, suitable for adults and children.

- Easy one-hand operation with maximum performance
- Max vacuum (within 10 s) -60 kpa, -450 mmhg, -0.6 Bar
- Free air flowrate > 0.33 L/s (20 L/min)
- Incl. Suction container 300 mL
- Overflow protection
- Adapter for suction catheters
- Pvc suction tubings, size S and L
- For emergency and transport cases





## VENTILATION

### VG70 VENTILATOR

Item Code: 7720699



The VG70 is a comprehensive lung mechanics monitoring device including compliance, airway resistance, PEEP, RSBI and WOB. It provides references on treatment evaluation and promotes better treatment plan and non-invasive respiratory care. Its detachable metal exhalation valve is autoclavable, ensuring easy cleaning and infection control. The intuitive touchscreen interface grants quick access to settings and patient data, streamlining operation and enhancing clinician efficiency. Turbine technology eliminates reliance on external air sources. Built-in castors ensure smooth intra-hospital transport, providing stability and ease during critical situations.

- Adult and neonate reusable breathing circuit, reusable and autoclavable
- Humidifier bottle
- Maintenance kit including 1x air filter, 2x tubing, 4x o-rings
- Rechargeable battery pack
- Plastic protective dustcover

### RESUSCITATOR SET

For adults

Item Code: 7123026

Contains:

- Laerdal silicone resuscitator
- Silicone face mask, size 3/4
- Silicone face mask, size 4/5
- Guedeltubus, size 0, 60 mm, 5 pcs
- Guedeltubus, size 1, 80 mm, 5 pcs
- Guedeltubus, size 2, 100 mm, 5 pcs
- FaceShield emergency resuscitation wipe with key ring, camouflage



## RESUSCITATOR BAG

For adults

Item Code: 7723278



## RESPIRATOR MASK

For adults

Item Code: 7704988



## OXYGEN MASK WITH RESERVOIR BAG

FOR ADULTS

Item Code: 7723982

FOR CHILD

Item Code: 8800824



## WESTMED® POCKET MASK, WITH VALVE AND FILTER

Item Code: 5810066



The WESTMED® Pocket Mask is designed for mouth-to- mask ventilation of a non-breathing adult, child or infant as a barrier between the rescuer and patient. For use on an infant, the mask may be turned 180° to achieve a better seal.

- Pre-inflated cuff for effective and good seal
- Latex-free

## OXYGEN SUPPLY

### OXYGEN MASK

For adults

Item Code: 7061623

For children

Item Code: 7061631



### OXYGEN CYLINDER, 2 L

Filled

Item Code: 7115891

Empty

Item Code : 7725427



## INTUBATION

### GUEDEL AIRWAY TUBE

color-coded

Size 000, 40 mm, light green

Item Code: 4423162

Size 00, 50 mm, blue

Item Code: 4423164

Size 0, 60 mm, grey

Item Code: 7021957

Size 1, 70 mm, brown

Item Code: 7024822

Size 2, 80 mm, green

Item Code: 7021958

Size 3, 90 mm, yellow

Item Code: 7023357

Size 4, 100 mm, red

Item Code: 7021959

Size 5, 110 mm, purple

Item Code: 5802114



### GUEDEL TUBES

color-coded

Size 0, 60 mm, black

Item Code: 7327165

Size 1, 70 mm, white

Item Code: 7327166

Size 2, 80 mm, green

Item Code: 7327167

Size 4, 100 mm, red

Item Code: 7327169



### ENDOTRACHEAL TUBE WITH CUFF

color-coded

Size 6.0, CH 24

Item Code: 5005514

Size 7.0, CH 28

Item Code: 5005516

Size 7.5, CH 30

Item Code: 5005517

Size 8.0, CH 32

Item Code: 5005518



## OTHER

### WESTMED® RESCUE BLANKET, silver/gold

Item Code: 5065422

- High vacuum aluminum vaporized foil
- Dimensions: 210 x 160 cm
- Reflects up to 85% of body heat
- Can prevent radiation loss
- Prevents cooling and hypothermia
- Can also be used as heat protection



### FIRST AID KIT

special laboratory & chemistry filled, orange

Item Code: 5065402



## OFFICE FIRST AID KIT

Item Code: P7764031



STAVANGER® E2000 Rescue Bag, filled with:

- YPSIPLAST® adhesive plaster, 2.5 cm x 5 m
- Clean-Comfort alcohol swabs, 6.5 x 3 cm
- Universal scissors / dress scissors, 19 cm
- 12x Safety pins
- aluderm® dressing pack, 4 m x 8 cm, compress 8 x 10 cm, white, sterile, aluminum coated
- WESTMED® Digital clinical thermometer
- Examination gloves, size L, nitrile, blue, 1 pair
- YPSIPAD eye compress, 56 x 70 mm, sterile
- YPSISAVE dressing pack, 6 x 8 cm and 10 x 12 cm
- Triangular cloth, 96 x 96 x 136 cm, non-woven, white, non-sterile
- Forceps, 14.5 cm, surgical, 4:5 standard
- 90x Gazin swabs, plum size
- Plastic bag, PE, 80 x 120 mm
- Octenisept 15 mL
- Instant cold compress, 15 x 17 cm and 15 x 25 cm
- Hansaplast® Universal quick wound dressing, 20 strips

### THERMO BOX, 6.6 L

Item Code: 7080460



### COMBAT APPLICATION TOURNIQUET

Item Code: 7310329



### INSTANT COLD COMPRESS

15 x 21 cm

Item Code: 7023852



### INSTANT EYE-FLUSHING SOLUTION, 500 mL

Item Code: 7090087



### COLD/WARM COMPRESS

13 x 14 cm

Item Code: 7039541



### DISPOSABLE RAZOR, 100 pcs blue, single-edged

Item Code: 7322557



## IMMOBILISATION

### STIFNECK SELECT

For adults, 4-way adjustable

Item Code: 5015641

- Effective motion restriction without airway blockage
- Optimal size selection with simple finger-sizing method and color codes
- Facilitates procedures like pulse checks and airway management
- Backed by independent studies for safety
- Radiolucent, MRI and CT scan compatible
- Latex-free



### STIFNECK PEDI-SELECT

For pediatric patients, 3-way adjustable

Item Code: 5016540

- Pink Velcro® strap for quick identification
- Improved sizing for a wider range of children
- Stronger hooks for oxygen devices
- Innovative integrated fastener for Velcro straps, boosts performance in different environments
- Tailored design for children's anatomy
- Large openings for advanced airway management
- Same easy sizing and application method as its famous parents



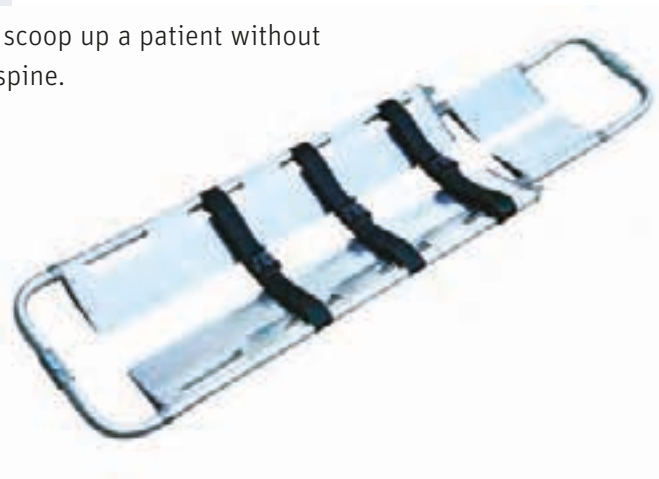
The Stifneck® Select Collars simplify your job, save space and provide outstanding immobilization. The quickest and easiest-to-use adjustable collar on the market. All you have to do is measure the patient, select the size, adjust and lock! You have easy access for pulse checks, advanced airway procedures, and visualization through oversized trachea hole.

### STRETCHER SCOOP

Item Code: 7131757

Two hinged, interlocking pieces allow operators to gently scoop up a patient without having to roll them, decreasing movement to the cervical spine.

- Dimensions: 210 x 44 x 6 cm
- Made from lightweight aluminum
- Includes three restraints
- Easy-to clean surface is impervious to fluids
- Folds for compact carrying and storage
- Load capacity: <159 kg





## BAXSTRAP SPINEBOARD

Item Code: 5015657

The BaXstrap® Spineboard is one of the lightest boards on the market. The contoured design allows the board to nest compactly. This unique feature also offers patients more comfort, making it less likely that they would move around and aggravate their injuries. The spineboard is easy to clean and decontaminate, because it is without grooves and seams. 14 extra large carrying handles make transport easy, even when wearing thick gloves. It is suitable for water, mountain rescue and rescue in general.

- Radiolucent, MRI and CT scan compatible
- Dimensions: 40 x 183 x 6.5 cm
- Weight 6.2 KG
- Max. Load capacity: 110kg



## SPEEDBLOCKS FOR HEAD FIXATION ON SPINEBOARD

Item Code: 7068603

Designed for durability and performance, SpeedBlocks offers a simple four-step process for application, a unique multi-axis block system to accommodate all head shapes and injury positions. Disposable head straps and block pads allow easy and low cost replacement.

- Disposable head straps and blocks for cost-effective replacement
- Reliable handle-locking mechanism for confident use
- Blocks contour to fit patients aged 2 and up
- Universal base, replaceable foam pads for easy cleaning
- Sliding blocks for convenient multi-axis adjustment
- Lightweight blocks at 150 grams each
- Radiolucent, MRI, and CT scan compatible
- Latex-free



## BAXSTRAP SPINEBOARD BELT TILLER

Item Code: 7100950

- With velcro fasteners
- Colored
- Adjustable







Chapter 4

# RESCUE BAGS

EMERGENCY BAGS  
AMPOULE SYSTEM





## STAVANGER®: A synonym for quality

In 2001 we were one of the first companies in the world to develop a backpack to replace the classic suitcase and since 2002 we have been supplying the majority of NGOs and national rescue services with our high-quality bags, which are manufactured in Europe.

Thanks to regular exchanges with the various end users, we have succeeded in continuously improving the bags over the years and are now one of the market leaders in this segment.

We are proud to report that in recent years we have been able to send out over 5,000 fully packed bags with an average filling of 90 individual components. The individual components are also consistently of high quality from well-known manufacturers such as Hartmann, Braun, Laerdal, Teleflex and Rüschi.



We will be happy to provide you with samples to give you the opportunity to convince yourself of our quality.

## EMERGENCY BAGS

### THE SPACE MIRACLE OR SAVER – WITH MANY HELPFUL REFINEMENTS

The STAVANGER® XL series is the standard when it comes to emergency care. With the integrated magnet system, different sized storage modules can be placed in the backpack, maintaining the proven clarity and modularity. The large amount of space, the flexible container and system modules, the good overview and much more make the models an indispensable companion in everyday life.

- ✓ Easy cleaning thanks to the magnet system
- ✓ Ergonomically shaped shoulder straps with removable chest strap
- ✓ High quality 2-way zippers
- ✓ Winch loop for height rescue
- ✓ Various front pockets – depending on the model

### STAVANGER® XL5000 RESCUE BACKPACK, 77 L

#### Red

Item Code: 5828053



#### Grey

Item Code: 5828058



The XL5000 emergency backpack is ideal when all other models are too small. The two front pockets are suitable for additional materials. For example, the lower compartment, which is also equipped with a magnetic system, can hold our specially developed ampullarium XL for up to 300 ampoules.

- Truck tarpaulin, original CORDURA® fabric and 3M™ Scotchlite reflective stripes
- Optional interchangeable Velcro label
- Accommodates oxygen if required
- External dimensions (W x H x D):  
43 x 56 x 32 cm
- Volume: 77 liters
- Weight: 4.6 kg
- Scope of delivery: empty



Proven magnet system



Individual hook-and-loop label exchange



### STAVANGER® XL1000 RESCUE BACKPACK, 63 L

**Red**

Item Code: 5828035



**Royal Blue**

Item Code: 7717798



The rescue backpack has ergonomically shaped shoulder straps for high wearing comfort, which is especially important for longer rescue routes. In addition, the XL1000 has an auxiliary handle for shouldering and a 2-piece plastic carrying handle for easy removal from the rescue vehicle. A retaining rubber on the back ensures that the shoulder straps stay in place.

- Truck tarpaulin, original CORDURA® fabric, original 3M™-Scotchlite™ reflective material
- Interchangeable Velcro label
- Oxygen intake possible
- Dimensions without handles (W x H x D): approx. 43 x 55 x 26 cm
- Volume: 63 liters
- Weight: 3.9 kg
- Scope of delivery: empty



### STAVANGER® C1000 RESCUE BACKPACK, 43 L

**Neon Yellow**

Item Code: 5828068



**Red**

Item Code: 5828070



**Matt black**

Item Code: 5828069



The compact design with a self-building center panel makes this 2019 Red Dot winner one of our most popular backpack models. The C1000 offers sufficient space for a clear arrangement of the most diverse emergency materials up to the 2-liter oxygen bottle.

- Material: truck tarpaulin, original CORDURA® fabric and 3M™ Scotchlite reflective stripes
- Interchangeable Velcro labels
- Oxygen intake possible
- Dimensions without handles (W x H x D): approx. 39 x 46 x 24 cm
- Volume: 43 liters
- Weight: 3.1 kg (empty)
- Scope of delivery: empty



### STAVANGER® E3000 EMERGENCY BAG, 24 L

Item Code: 5828054

The emergency bag STAVANGER® E3000 is completely made of strong truck tarpaulin. The black body receives color accents through the partially red and yellow pocket flaps and the 3M™ reflective stripes. The E3000 has two exterior side pockets and one front pocket. The 3M™ Scotchlite reflective stripes on the sides provide maximum safety at and on the scene of an accident.

- Truck tarpaulin and 3M™ Scotchlite reflective stripes
- Dimensions (W x H x D): 37 x 25 x 26 cm
- Volume: 24 liters
- Weight: 2.2 kg
- Scope of delivery: bag with shoulder strap, empty



### STAVANGER® E2000, 41 L

Item Code: 7318341

The STAVANGER® E2000 offers adjustable interior compartments with Velcro dividers, maximizing organization. Additional storage includes a mesh pocket in the lid with three compartments and a separate zippered pocket for items like a neck collar (e.g., Stifneck). 3M™ reflective strips ensure high visibility day and night. The main compartment features a three-sided lockable zipper for security. Partial padding on the back and sides enhances comfort. The detachable, adjustable padded shoulder strap and buckles allow for personalized adjustments. Plus, it includes handles on the top and side for easy carrying

- Material: polyester, Cordura and 3M™ Scotchlite reflective stripes
- Dimensions (W x H x D): 73 x 17 x 18 cm
- Scope of delivery: bag with 2 shoulder strap loops, empty



### STAVANGER MINI ZIPPED BELT POUCH,

9 x 11.5 x 2.5 cm

#### Camouflage

Item Code: 7332585

#### Black

Item Code: 7332586

STAVANGER mini zipped belt pouch similar to the STAVANGER + XL backpack

- Material: Polyester black, front made of coloured digital print tarpaulin
- Dimensions (W x H x D): approx. 9 x 12.5 x 2.5 cm
- Scope of delivery: empty



### WESTMED® RESQ PACK EMERGENCY BACKPACK, 63 L

Item Code: 5810300

The WESTMED® ResQ Pack emergency backpack is a versatile and cost-effective choice, offering ample space, accessory pockets, colorful module pockets and an integrated oxygen holder. It is made from durable 650 gsm truck tarpaulin and features yellow reflective strips on the front, sides and straps for increased visibility. Quick-access front and side pockets, including a padded lower front pocket for an AED, ensure practical organization. The Velcro fasteners on the two backpack trays allow the attachment of container modules or an oxygen cylinder holder. The pack contains eight module bags in red, blue, yellow and green for efficient sorting.

- Dimensions incl. outer pockets (W x H x D):  
50 x 55 x 28 cm
- Weight incl. module pockets: 3.4 kg
- Chest strap: detachable/adjustable
- Made in Europe
- Scope of delivery:  
4x Modular bags lid compartment:  
1x yellow and red, (W x D x H) 34 x 13 x 5 cm /  
1x green and blue 26 x 17 x 5 cm and  
4x Module bags bottom compartment:  
1x yellow and red (W x D x H) 26 x 17 x 10 cm /  
1x green and blue 34 x 13 x 10 cm



## AMPOULE SYSTEM

### STAVANGER® AMPOULE KIT BASIC SET

Size XM, 13 x 18 x 5 cm  
Item Code: P5828201

Size MM, 18 x 24 x 12 cm  
Item Code: P5828203

Size XL, 25 x 36 x 12 cm  
Item Code: P5828200



reddot winner 2021



The STAVANGER® ampoule systems provide a clear arrangement and organization of medications and other materials. With one click, glass ampoules are secured with the unique retaining clips. The clips can be arranged lengthwise or crosswise to make the best use of space. With the labeling clips, refilling medications is easy and minimizes errors. The system module has a theme coating for storing temperature-sensitive medications.

## CONTAINER MODULES

### CONTAINER MODULE LIGHT magnetic system

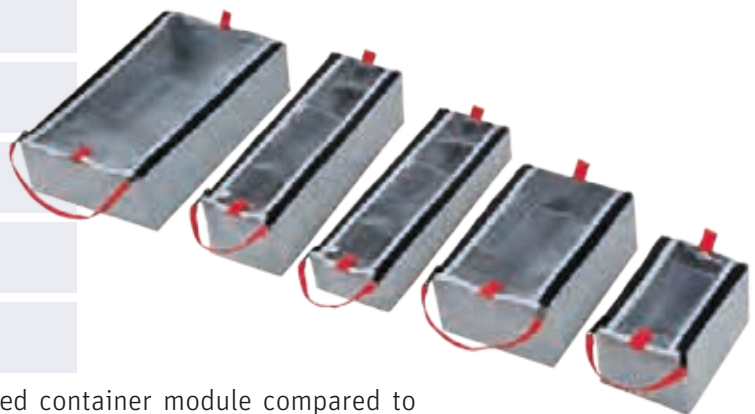
Size M, 18 x 13 x 10 cm  
Item Code: 7762344

Size MM, 24 x 18 x 10 cm  
Item Code: 7762516

Size L, 36 x 13 x 10 cm  
Item Code: 7762342

Size XL, 36 x 25 x 10 cm  
Item Code: 7762862

Size LF, 36 x 13 x 5 cm  
Item Code: 7762860



The container module Light is a weight-optimized container module compared to standard modules, which helps to minimize the total weight of a backpack up to 1,000 g. The single-wall design of the module offers a transparent lid compartment incl. labeling field. The lid can be easily opened via two zippers even inside a backpack and does not have to be removed from the backpack. The use of the magnet system makes hygienic preparation a breeze.









Chapter 5

# KITS

EMERGENCY KITS  
HYGIENE KITS  
DIAGNOSTIC  
RELIEF  
PPE

## EMERGENCY KITS

---

Leading kit packaging since 1997, we now deliver about 50,000 kits per quarter, optimizing production with an integrated ERP module. Each kit receives a unique tracking number for thorough documentation. Our customizable labeling suits diverse projects. Fleischhacker offers tailored, medical-grade kits, ensuring organized access to crucial tools. Our approach follows a precise four-step process: **identifying your requirements, selecting items, composing the kit**, and finally, **producing it**.



### 1 Requirements

Opting for our bundling option brings big perks: lower purchasing and processing costs, streamlined logistics, and less need for extensive user training. Imagine a customer needing a customized trauma bag for a tight ambulance cabinet – that's where our solution shines.



### 2 Item Selection

Leveraging our deep expertise, we curate precise selections tailored to your specific requirements. For a trauma bag, critical tools like modular surgical instruments, thoracic drainage essentials, and reliable immobilization gear are essential for addressing diverse emergency scenarios effectively.



### 3 Customization

Together, we create your custom kit, guaranteeing it matches your precise specifications. Test samples of chosen bags and items to ensure they fit your needs. Our design includes neatly packed modules in removable transparent pockets for clear organization. Plus, other materials are thoughtfully arranged for easy adjustment or removal, tailored to your specific needs.



### 4 Production

Your kit is carefully packed in one of our warehouses in compliance with safety standards and smart consolidation practices. Each kit is inspected thoroughly before it is prepared for delivery to you.



Explore examples of kits we've created, ready to meet your needs at a moment's notice.

## INDIVIDUAL FIRST AID KIT

Item Code: P7752294



- QuikClot® EMS rolled gauze blood sedimentation, 7.5 cm x 1.22 m
- Special pressure bandage pack, white, sterile
- Compression sterile gauze
- Nasopharyngeal tube according to Wendl, CH 24, of PVC
- Guedel tube, size 3
- Examination gloves, nitrile, size L, 2 pair
- Fixation plaster, 2.5 cm x 5 m, of textile fabric
- 20x Fixation bandage, 10 cm x 4 m
- Combat-Application-Tourniquet™ C-A-T Ligation system, black
- Rescue blanket, standard, 160 cm x 210 cm, silver-gold
- Rusch ACS® ASHERMAN CHEST SEAL®, sterile
- Bandage scissors according to Lister, 18 cm
- Triangular cloth, 96 x 96 x 136 cm, non-woven carrier, white, non-sterile
- Belt bag, black

## ARROW® EZ-IO® KIT

Item Code: P7758215

- Arrow® EZ-IO® G3 Power Driver, Intraosseous Vascular Access System, brown
- EZ-IO® 15 mm 15 GA, intraosseous needle set
- EZ-IO® 45 mm 15 GA, intraosseous needle + stabilizer kit
- EZ-IO Infusion needle 25 mm, blue, single needle
- Nobafix® Elastic gauze bandages, 12 cm x 4 m
- Bag, yellow soft case with holder for EZ-IO drill G3





## EMERGENCY MAJOR TRAUMA BAG with STAVANGER® XL5000

Item Code: P7757520



### KIT MAJOR TRAUMA 2021

#### MODULE 1, AIRWAY

Item Code: P7757268

- Container module light, size XL, grey and labelling
- The BAG II™ Disposable resuscitator bag, for adults, with mask size 5
- Disposable mask, for children size 3
- Disposable mask, for neonatal, size 1
- WESTMED® Rescue blanket, 160 cm x 210 cm, silver-gold
- Guedel tube, size 1, 2 and 4, each

#### MODULE 2, INSTRUMENTS

Item Code: P7757269

- Stopwatch with lanyard
- WESTMED® Finger pulse oximeter
- WESTMED® Blood pressure monitor, for adults, standard
- WESTMED® Velcro sleeve, for children
- WESTMED® Velcro sleeve, for babies
- WESTMED® Pressure infusion cuff, 500 mL
- WESTMED® Double-head stethoscope, for adults, Rappaport, black
- WESTMED® Digital clinical thermometer, with signal tone
- WESTMED® Diagnostic light
- Splinter tweezers according to Feilchenfeld, 11.5 cm
- Bandage scissors according to Lister, 14 cm
- Universal / dress scissors, 19 cm
- Tweezers, 14.5 cm, anatomical, straight
- Tweezers, 14.5 cm, surgical, straight

### MODULE 3, INTUBATION

Item Code: P7757274

- Container module light, size L, grey and labelling
- Metal Max+ GS disposable laryngoscope handle, LED, with batteries
- Magill intubation forceps, for children, 20 cm
- Leukotape® classic tape dressing, 2 cm x 10 m, white
- Laryngeal mask, size 2.5, for children and size 4, for adults
- Intubation stylet, size 3.3 CH 10 and size 4.7 CH 14
- PROACT HPC™ Laryngoscope blade, cold light, size 2 and size 4, MacIntosh, disposable, plastic
- Endotracheal tube with cuff, size 4.0 CH 16, size 6.0 CH 24, size 7.0 CH 28 and size 8.0 CH 32
- Examination gloves, size M and L, nitrile, blue, 1 pair each
- Wooden mouth spatula, 150 mm
- Injekt® Solo disposable syringe, 5 mL

### MODULE 5, INJECTION

Item Code: P7757271

- Container module light, size LF, grey and labelling
- Multi-Safe mini cannula disposal box, 300 mL
- Skin disinfection, 50 mL
- Injekt® Solo disposable syringe, 10 mL
- 5x Injekt® Solo disposable syringe, 2 and 5 mL
- 10x BD Microlance™ 3 special cannula, 21 G
- 10x Sterican® Standard cannula, 27 G
- 10x Sterican® Special cannula, Insulin, 30G
- 10x Clean-Comfort alcohol swab, 6.5 x 3 cm
- Examination gloves, nitrile, blue, size XL, and M, 1 pair
- 2x Examination gloves, nitrile, blue, size L, 1 pair

### MODULE 4, INFUSION

Item Code: P7757273

- 2x STAVANGER® Container module light, size LF, grey and labelling
- Compress, paraffin/vaselin, 10 x 10 cm, sterile, 10 pcs
- WESTMED® Venous tourniquet, blue
- 9x IV Cannula/catheter plaster, sterile, 6 x 8 cm with compress
- 3x Fixation bandage, 6 cm x 4 m, white
- 3x TRO-VENOCATH plus I.V. cannula, 20 G, 1.1 x 32 mm, pink
- 2x TRO-SOLUSET G Infusion set, sterile
- 3x TRO-VENOCATH plus I.V. cannula, 16 G, 1.7 x 45 mm, grey
- 3x TRO-VENOCATH plus I.V. cannula, 18 G, 1.3 x 45 mm, green
- Examination gloves, size XL, 2x L and M nitrile, blue, 1 pair
- 10x Clean-Comfort alcohol swab, 6.5 x 3 cm
- Skin disinfection, 50 mL

### MODULE 6, WOUND DRESSING

Item Code: P7757275

- Container module light, size L, grey and labelling
- QuikClot® EMS rolled gauze blood sedimentation, 7.5 cm x 1.22 m
- 2x Cottonelast® adhesive short-stretch bandage, 8 cm x 5 m
- Tourniquet Tie-off system
- Idealbinde, elastic bandage, 6 cm x 5 m, white
- Sticking plaster, 2.5 cm x 5 m
- Crepe paper bandage, 10 cm x 4 m
- 10x Parafin gauze dressing, 10 x 10 cm, sterile
- 5x RUDASTRIP® suture strips, 3 x 75 mm
- 25x ES-Kompressen, gauze swabs, 10.0 x 10.0 cm, sterile, 8-ply, 1 pair
- 100x ES-Kompressen, gauze swabs, 10.0 x 10.0 cm, non-sterile, 8-ply
- 2x Examination gloves, nitrile, blue, size M and L, 1 pair
- Emergency bandage, 10 cm x 4.5 m



## EMERGENCY TRAUMA BAG

Item Code: P7760742



- AEROCASE® Emergency Backpack XL, red
- 2x Safety glasses, colourless
- 2x Wooden mouth spatula, 150 mm
- 10x Microlance cannula No. 20 0.4 x 19 mm, grey
- 10x BD Microlance™ 3 special cannula, 30 G, 0.29 x 13 mm, yellow
- 10x BD Microlance™ 3 special cannula, 21 G, 0.80 x 50 mm, green
- 5x Injekt® Solo syringe, 2 mL
- 6x Injekt® Solo syringe, 5 mL
- Injekt® Solo syringe, 10 mL
- 2x YPSIPLAST® Sticking plaster, 2,5 cm x 5 m
- 3x YPSIFIX® Fixation bandage, 6 cm x 4 m, white
- 25x ES-Kompressen, gauze swabs, 10.0 x 10.0 cm, sterile, 8-ply, 1 pair
- NOBACUTIS® compress, paraffin/vaselin, 10 x 10 cm, sterile, 10 pieces
- QuikClot® EMS rolled gauze blood sedimentation, 7.5 cm x 1.22 m
- Leukotape® classic tape dressing, 2 cm x 10 m, white
- 10x Lomatuell® H Parafin gauze dressing, 10 x 10 cm, sterile
- RUDASTRIP® suture strips, 3 x 75 mm, 5 pieces
- Idealbinde, elastic bandage, 6 cm x 5 m, white
- Crepe paper bandage, 10 cm x 4 m
- 2x Cottonelast® adhesive short-stretch bandage, 8 cm x 5 m
- 20x Clean-Comfort alcohol swab, 6.5 x 3 cm, folded to approx. 3.2 x 3 cm
- 3x Ringer's solution, 500 mL, freeflex® bag
- Endotrachealtubus with cuff, size 4.0 CH 16
- Endotrachealtubus with cuff, size 6.0 CH 24
- Endotrachealtubus with cuff, size 7.0 CH 28
- Endotrachealtubus with cuff, size 8.0 CH 32
- Intubation stylet, size 3.3 CH 10, length 48 cm
- Intubation stylet, size 4.7 CH 14, length 54 cm
- Universal / dress scissors, 19 cm
- The BAG II™ disposable resuscitator bag, for adults, with mask size 5
- Disposable mask, for children size 3 and baby size 1
- Softa-Man® hand disinfection, 100 mL
- Bandage scissors according to Lister, 14 cm
- Tweezers, 14.5 cm, anatomical, straight
- Tweezers, 14.5 cm, surgical, straight
- Splinter tweezers according to Feilchenfeld, 11.5 cm,
- WESTMED® Pressure infusion cuff, 500 mL
- WESTMED® Diagnostiklight, plastic
- WESTMED® Tourniquet, blue

- WESTMED® Blood pressure monitor, for adults
- WESTMED® Velcro sleeve, for babies and children
- WESTMED® Digital thermometer, with alarm
- WESTMED® Pulse oximeter
- 3x Examination gloves, size XL, Nitrile, blue, 1 pair
- 7x Examination gloves, size L, Nitrile, blue, 1 pair
- 5x Examination gloves, size M, Nitrile, blue, 1 pair
- Examination gloves, size S, Nitrile, blue, 1 pair
- Foliodress® Mask Comfort Loop, Typ IIR face mask, 10 pcs
- Magill intubation forceps, for children, 20 cm
- Guedel tube, size 1, 70 mm, brown
- Guedel tube, size 2, 80 mm, green
- Guedel tube, size 4, 100 mm, red
- Multi-Safe mini Cannula disposal box, 300 mL
- Rescue/emergency sheet, 200 x 70 cm
- Tourniquet
- 3x TRO-VENOCATH plus I.V. cannula, 20 G, 1.1 x 32 mm, pink
- 3x TRO-VENOCATH plus I.V. cannula, 18 G, 1.3 x 45 mm, green
- 3x TRO-VENOCATH plus I.V. cannula, 16 G, 1.7 x 45 mm, grey
- 2x TRO-SOLUSET G Infusion set, sterile
- SAM Pelvic Sling II, size L, 91 - 152 cm
- Metal Max+ GS disposable laryngoscope handle, LED, with batteries, plastic
- PROACT HPC™ laryngoscope blade, cold light, size 2 & 4, MacIntosh, disposable, plastic
- SOLUS™ Laryngeal mask, size 2.5, for children and size 4, for adults
- 9x IV Cannula /catheter plaster, sterile, 6 x 8 cm, with compress
- Stopwatch with lanyard
- WESTMED Double-head stethoscope, for adults, Rappaport, black
- WESTMED® Rescue blanket, 160 cm x 210 cm, silver-gold
- 30x Patient identification bracelets adults, write on type
- Pen



## FIRST AID KIT

Item Code: P7755428

- Non-woven promo bag
- WESTMED® Pocket mask
- WESTMED® Rescue blanket, 160 x 210 cm, silver-gold
- Bandage scissors according to Lister, 18 cm
- Tourniquet
- 2x Rusch ACS® ASHERMAN CHEST SEAL®, sterile
- 2x Compressed gauze, Z-folded, 10 cm x 3.75 m, sterile
- QuikClot® EMS rolled gauze blood sedimentation, 7.5 cm x 1.22 m
- Emergency bandage, 6 inch (15 cm x 4 m), green, sterile
- 2x Examination gloves, size M and L, Nitril, blue, 1 pair
- 2x Sticking plaster, 2.5 cm x 5 m
- ES-Kompressen, gauze swab, 5 x 5 cm, sterile, 8-ply, pair
- 10 x Askina® Mullkompressen, 10 x 10 cm, sterile, 8-ply, pair
- 5x Dressing packet, 6 x 8 cm, white, sterile
- Dressing packet, 10 x 12 cm, white, sterile
- Triangular cloth, 96 x 96 x 136 cm, non-woven carrier, white, non-sterile



## TRAUMA FIRST AID KIT

Item Code: P7757264

- Non-Woven PromoBag, white
- Belt Bag, black
- 2x Examination gloves, nitrile, blue, size M and L, 1 pair
- WESTMED® Rescue blanket, 160 cm x 210 cm, silver-gold
- WESTMED® Pocket mask
- 2x Rusch ACS® ASHERMAN CHEST SEAL®, sterile
- Tourniquet
- Emergency Bandage, 10 cm x 4,5 m, camouflage
- QuikClot® EMS, rolled gauze blood sedimentation, 7.5 cm x 1.22 m
- Compressed gauze bandage, z-folded, 10 cm x 3.75 cm, sterile
- 2x YPSIPLAST® sticking plaster, 2,5 cm x 5 m
- 10x Askina® gauze compress, 10 x 10 cm, sterile, 8-ply, pair
- 3x YPSISAVE Dressing packets, white, sterile, 6 x 8 cm + 10 x 12 cm
- Triangular cloth, 96 x 96 x 136 cm, Non-woven carrier, white, non-sterile
- Crepe paper bandage, 10 cm x 4 m
- Nobafix® Elastic gauze bandages, 10 cm x 4 m
- Bandage scissors according to Lister, 18 cm



## DIAGNOSTIC

---

### DIAGNOSTIC KIT

Item Code: P7774093

- STAVANGER® V3000 TRAUMA bag, grey
- Ophthalmoscope HT-OP10
- Otoscope HS-OT10 set complete with handle & spare tips
- LED and Xenon lamp and battery handle for otoscope
- Blood glucose meter GL 44, mg/dL, black
- Beurer GL44 / GL50 / GL50 evo Test strip, 50 pcs
- Combur9 Test® Urine test strips, 50 pcs
- WESTMED® double-head stethoscope, for adults, Rappaport, black
- WESTMED® Pupil light, made of brushed steel
- WESTMED® Digital clinical thermometer
- 10x Blood collection kit
- Bandage scissors according to Lister, 14 cm
- 2x Examination gloves, size L, nitrile, blue, 1 pair
- 10x Varta industrial battery, LR06, type AA



## RELIEF

---

### RELIEF KIT FOR 1 PATIENT

Item Code: P7767840

- Foldable Bed, 190 x 64 x 42 cm
- Foam mattress, 190 x 70 x 8 cm
- Envelope sleeping bag without hood, 210 x 85 cm
- First Aid Kit, Item Code: P7755428
- 10x Hygiene Kit, Item Code: P7760076





## PPE

---

### PPE KIT FOR 1 PERSON AND 1 DAY IN BAG

Item Code: P7765205

- Sportbag SHIFT, with marking “PPE KIT FOR 1 PERSON” and Fleischhacker Logo, black
- CoverTex® overall, white, CE, Kat. III, Typ 5 + 6, size M, L and XL
- PE-shoe cover, blue, 10 pcs
- 5x CoverStar®Hood CKA, Kat. I
- 5x Protective goggles
- 5x WESTMED® FFP2 foldable mask without valve, headgear
- care & serve® wiroDEFEND 28 chemical protective gloves, nitrile, green, long, 1 pair: 3x size S, 2x size M, 2x size L and 1x size XL
- WESTMED® examination gloves, size L, nitrile, powderfree, blue, 100 pcs
- Tape, PPE, white, with Fleischhacker Logo
- Biohazard bags, 50 L, 64 x 89 cm, red, 100 pcs



## HYGIENE KITS

### HYGIENE KIT

#### Option 1

Item Code: P7760076

- Non-woven promo bag
- Toothbrush and toothpaste
- Towel 70 x 40 cm
- 6x Shampoo/shower gel, 50 mL
- Toilet soap
- 2x Disposable razor, 2 blades
- Shaving cream
- Packet of 10 paper tissues
- Packet of 10 sanitary pads
- Bamboecomb



### HYGIENE KIT

#### Small

Item Code: P7772466

- Cosmetic bag, transparent
- Bamboecomb
- 5x Shampoo/shower gel
- Travel toothbrush, 50mL
- Toothpaste

### INDIVIDUAL HYGIENE KIT

Item Code: P7760064

- Shoulder bag
- Patient blanket, disposable
- Wet wipes
- 10x Condom





Chapter 6

---

# WESTMED® ITEMS

STETHOSCOPES  
BLOOD PRESSURE  
OTHER DIAGNOSTICS  
PPE  
EMERGENCY



## STETHOSCOPES

### WESTMED® DOUBLE-HEADED STEHOSCOPE

#### Adults

Item Code: 5810011

#### Children

Item Code: 5810012

#### Newborn

Item Code: 5810028

Our double-headed stethoscope convinces with an excellent price/performance ratio and offers outstanding acoustic quality. The robust black PVC tubing is not only durable but also soundproof against external noise. The 180° rotatable chest piece can switch the stethoscope from the diaphragm to the funnel side.



### WESTMED® FLAT-HEAD STETHOSCOPE

#### Adults

Item Code: 5810009

#### Children

Item Code: 5810010

The WESTMED® flat head stethoscope is characterized by an excellent price/performance ratio. The stethoscope is equipped with an approx. 55 cm long black PVC tube and aluminum chestpiece.



### WESTMED® FLAT-HEAD STETHOSCOPE

#### Type Rescue service

#### Adults

Item Code: 5810055

The WESTMED® flat-head stethoscope Deluxe consists of a solid stainless steel chestpiece and features excellent acoustics. The sleek black tubing has a length of 55 cm. The scope of delivery includes a replacement diaphragm and soft replacement ear tips.



### WESTMED® DOUBLE-HEAD STETHOSCOPE RAPPAPORT

Item Code: 5810026

The WESTMED® stethoscope type Rappaport with a high-quality double tube system guarantees optimal sound conduction. To switch the funnel, the double-headed chest piece can be rotated 180°.

Generally, this chest piece is used to detect low-frequency heart sounds, first, second and diastolic third heart sounds.



## BLOOD PRESSURE

### WESTMED® BLOOD PRESSURE MONITOR

Adults

Item Code: 5810002



Our WESTMED® standard blood pressure monitor is very robust and an ideal alternative to the otherwise high-priced branded devices due to the price/performance ratio. The blood pressure values can be read easily and quickly thanks to the simple scale.

- Large scale
- With washable Velcro cuff for adults
- Scale: 0-300 mmHg
- Replaceable pump ball, smooth and latex-free
- Screw adapter
- Sturdy brushed steel spoon handle

## ACCESSORIES

### WESTMED® VELCRO CUFF

Strong arms, 60 x 17 cm

Item Code: 5810048

Children, 45 x 10 cm

Item Code: 5810046

Newborn, 38 x 7 cm

Item Code: 5810045



### WESTMED® MANOMETER

Item Code: 5810003



## OTHER DIAGNOSTICS

### WESTMED® FINGER TIP OXIMETER

Item Code: 5810091

The WESTMED® Finger pulse oximeter is a compact medical device used to determine and monitor pulse and functional oxygen saturation via the patient's finger. It is suitable for random checks of SpO<sub>2</sub> and pulse on adults and children at home and in clinics.

- OLED displays SpO<sub>2</sub>, PR, PI, pulse bar and waveform
- Robust design with splash water protection and drop protection
- 4-directional display with large numbers
- Audible and visual alarm



### WESTMED® DIAGNOSTIC LIGHT

Brushed steel

Item Code: 5810035



Plastic

Item Code: 5810034



The WESTMED® Diagnostic Lights in fountain pen format illuminate the mouth and throat area. Due to the clip, they can easily be stowed in the lab coat pocket.

### WESTMED® DIGITAL CLINICAL THERMOMETER

With acoustic signal

Item Code: 5810090



The digital clinical thermometer is for oral, axillary or rectal use. The measuring range lasts from 32.0 up to 43.9°C.

### WESTMED® REFLEX HAMMER

Item Code: 5810033



The WESTMED® reflex hammer is used for the neurological examination of various reflexes and the conductivity of the nerves. In addition to the two rubber ends for triggering reflexes, the reflex hammer also has a nerve needle and a brush in the handle.

- Weight: approx. 90 g
- Length: 18 cm

## PPE

### WESTMED® EXAMINATION GLOVES

Nitrile, powderfree, blue, 100 pcs

#### Size S

Item Code: 5810227

#### Size M

Item Code: 5810228

#### Size L

Item Code: 5810229

#### Size XL

Item Code: 5810230



### WESTMED® NITRILGUARD EXAMINATION GLOVES

long, 100 pcs

#### Size S

Item Code: 5810235

#### Size M

Item Code: 5810236

#### Size L

Item Code: 5810237

#### Size XL

Item Code: 5810238



### WESTMED® EXAMINATION GLOVES

Latex, powderfree, white, 100 pcs

#### Size S

Item Code: 5810231

#### Size M

Item Code: 5810232

#### Size L

Item Code: 5810233

#### Size XL

Item Code: 5810234



### WESTMED® FFP2 RESPIRATOR

Without exhalation valve, folded, PSA CATIII,  
EN149:2001 + A1:2009

#### Headband, 20 pcs

Item Code: 5810219

- PPE Cat.III
- EN 149:2001 + A1:2009
- Without valve
- Folded



#### Ear-loop, 30 pcs

Item Code: 5810220

- PPE Cat.III
- EN 149:2001 + A1:2009
- Without valve
- Folded
- Additional clip





## EMERGENCY

### WESTMED® UNIVERSAL SPLINT, rolled

Size XL, 100 x 11 cm  
Item Code : 5810320

Size M, 50 x 11 cm  
Item Code : 5810322



### WESTMED® UNIVERSAL SPLINT, folded

Size XL, 100 x 11 cm  
Item Code: 5810321

Size M, 50 x 11 cm  
Item Code: 5810323

Size S, 5 x 11 cm  
Item Code: 5810324

WESTMED® Splints are universal splints suitable for splinting almost all human limbs and the cervical spine. The rolled variants can be cut to individual sizes, depending on the application, for example, for foot, ankle or arm.

- Fluid repellent (blood, secretion, sweat)
- It can be used as an infusion splint, especially in neonatology & pediatrics
- Radiolucent
- Reusable
- Lightweight and compact
- Can be cut to any size

### WESTMED® FLEXSPLINT SET

1 x Xtra large, 1 x Medium, 2 x Small, folded  
Item Code: 5810325



### WESTMED® SINGLE-HAND TOURNIQUET

Item Code: 5810042

The strongly elastic WESTMED® one-hand vein tourniquet is very easy to use thanks to the multifunctional clip and guarantees quick application to the upper arm. It can be tightened and opened with just one hand.

- With strong elastic tourniquet
- Length: 38 cm



### WESTMED® PRESSURE INFUSION CUFF, 500 mL

Item Code: 5810000

Our WESTMED® pressure infusion cuff is used for pressure-supported infusion and transfusion.

The cuff is suitable for 500 mL infusion liquids and equipped with a precision manometer and pump ball. The manometer has a scale from 0 to 300 mmHg. The pressure can be regulated using the valve on the pump ball.

- For 500 mL transfusion and infusion bags
- With manometer and suspension device
- Scaling 0 - 300 mmHg
- Outer cover washable







Chapter 7

---

# MEDICAL DEVICES

DEFIBRILATOR  
MONITORING  
INFUSION  
OXYGEN  
VENTILATION  
SUCTION UNITS  
X-RAY  
OTHER



## DEFIBRILATOR

### BENEHEART C1A AED FULLY AUTOMATIC MACHINE

Item Code : 5666621

### BENEHEART C2 AED FULLY AUTOMATIC MACHINE

with TFT video screen  
Item Code : 5666623



The BeneHeart knows what a first aider needs. With the intelligent ResQNavi™ technology, you are guided step by step through the tense rescue process with animation coaching and voice announcements. Depending on the amount of time required, the level of competence of a rescuer can be determined at each step with appropriate guidance and encouragement to help you save lives with confidence.

The configurable CPR mode allows you to perform high-quality CPR. ECG analysis is performed in less than 5 seconds. A handy switch is provided to switch between adult and child mode. You do not need separate electrodes.

- Fully automatic incl. electrode pads and long-term disposable battery
- Multilingual - with up to 3 languages to choose from

### CARDIO-AID® 360-B AED

Item Code : 7334605

Fully featured clinical defibrillator, which is suitable to supply emergency and therapeutic cases in the patient care. With its built-in AED function, even the nurses can save lives. Optionally, it can be used also for patient care functions giving a great help in observing and registering vital signs after resuscitation.



## MONITORING

### PATIENT MONITOR PM-900

Item Code : 7185072

The PM900 patient monitor enables monitoring of ECG, pulse, blood pressure, oxygen saturation, temperature and respiration in adults, children and infants. The integrated Li-ion battery, carrying handle and compact dimensions make the patient monitor ideal for mobile use. The 12.1-inch patient monitor is particularly easy to operate using the quick keys. The Biocare PM900 is supplied with a wide range of accessories.

- Mounting bracket for wall mounting
- Spare lithium battery pack
- 3x NIBP tubes, newborn, infant, adult
- 3x blood pressure cuffs, newborn, infant, adult
- 2x patient cable extremities, neonate/pediatric, adult
- 2x electrodes, neonate/pediatric and adult
- Electrode gel, 250 mL
- 2x skin temperature probes
- 2x Reusable clip-on type, adult, infant
- 3x reusable clip-on types, neonate
- 10x disposable wrap-around types, neonate



## INFUSION

### INFUSION PUMP IP 12B

Item Code : 7174397

The IP 12B is an infusion pump, which is available in three work modes: time mode, weight mode, and rate mode. It features a double CPU and high-definition LCD display. Users can expect accurate infusion and precise control of the infusion volume and rate. The double CPU makes the infusion process safe and reliable. The system offers three occlusion pressure levels and an adjustable KVO rate. Wireless technology with the infusion supervision system is optional.



### SYRINGE PUMP IP 21B

Item Code : 7174513

The syringe pump IP 21B is a compact, lightweight, and small-sized medical device. It offers three work modes: rate, time, and weight, allowing for precise control of injection rate and volume. The key-lock function prevents misoperation, and the pump includes audio-visual alarms for enhanced safety. It features various alarm types to cater to different needs, and the KVO mode automatically activates once the injection is finished. The flow rate can be adjusted in increments as small as 0.1mL/h, and data can be input using either the keyboard or the shuttle key.



## OXYGEN

### OXYGEN CONCENTRATOR JAY-5

Item Code : 7200739

The system employs pressure swing adsorption technology, allowing for an adjustable flow rate ranging from 0 to 10 LPM. It features a large LCD display providing information on switch time, operating pressure, current running time, accumulation time, and presentation time, which can be set between 10 minutes and 40 hours. Additionally, the system includes maintenance reminders to ensure optimal functionality. Nebulizers and oximeters are available on site. RF cards are available for people to breathe oxygen in public.



### OXYGEN CONCENTRATOR JAY-10

Item Code : 7307376

The JAY-10 medical oxygen concentrator is equipped with an optional nebulizer and low purity alarm when oxygen purity is above or below 82 percent. Maintenance alarm sounds after 3000 hours of operation and for inside high temperature above 50°. A fingertip pulse oximeter is available to monitor the patient's oxygen saturation on site. It also has a small LCD screen to show accumulated time, working time and presetting time.



### 5-WAY FLOW SPLITTER FOR 5 PATIENTS

Item Code : 7720727

The ultimate flow splitter facilitates oxygen division from a single inlet to cater to multiple patients. It incorporates 5 independent flow meters, adjustable individually or collectively via the flow knob. It ensures a minimum oxygen flow of 0.125 L/Min for each outlet.



## VENTILATION

### VENTILATOR 3000D

Item Code : 7174548

Stylish and compact design, with the industry's top air compressor as a ventilation guarantee. Functionality for patients ranging from infant to adult, minimum tidal volume low to 20mL in VCV.

Supports invasive, non-invasive ventilation and high flow O<sub>2</sub> therapy, which can fulfill different clinical needs. It supports multiple advanced ventilation modes, such as DualPAP, APRV, PRVC and SIMV, use and maintenance is available in English, French, Spanish.

Features:

- High-speed, high-precision proportional solenoid valve (Norgren) makes air delivery fast and accurate, flexible triggering and switching methods, fully improve human-ventilator synchronization.
- The use of active expiratory valve allows patients to breathe easily and freely under any pressure, achieving true human-ventilator coordination.
- Flow support is a patented technology that provides excellent human-ventilator synchronization and allows patients to breathe more freely and comfortably.
- Autoclavable expiratory valve avoid cross-infection.
- Dedicated safe ventilation: Sourced from the top Swedish algorithm development team, multiple patents are developed for patient monitoring and control protection.
- Intelligent identification of detubation, obstruction, high pressure and automatic classification of the alarm system, apnea ventilation mode, guarantee a safe ventilation.



### VENTILATOR PORTABLE PORT+

Item Code : 7726698

PORT+ has been used throughout the globe as an incredibly reliable emergency transport ventilator.

The device is ideal for many other applications. Its applicability includes on-site emergency treatment, pre-hospital transport, inter-hospital transport, as well as intra-hospital transport. Whether the patient is an adult, child, or infant. PORT+ serves as a reliable life-supporting mechanism.





## SUCTION UNITS

---

### SUCTION PUMP LSU 4000 with disposable SERRES® canister

Item Code: 7153249

The LSU is lightweight, portable and easy to operate – even when wearing gloves. It is splash proof and safe to use in combination with defibrillators.

- Visual Support
- Easy conversion between canister systems
- Battery runtime app. 45 minutes
- Weight: 4 kg including battery
- Vacuum reach of 500+ mmHg, flow rate of >25 LPM



### SUCTION PUMP LCSU 4

Item Code: 7149839

Laerdal's LCSU® 4 suction unit combines rugged design with lightweight portability, an essential tool for every first responder.

- Click-in-place 300 mL canister
- no vacuum tube needed
- Easy to convert between 300 and 800 mL canister version
- Internal integrated filter systems for all canisters
- LED display for use day or night
- Rechargeable Battery, NiMH 12 volt 1.6 Ah. with 45 minutes run time



## ULTRASOUND

---

### ULTRASOUND SYSTEM BU-907

Item Code : 7184182

The ultrasound system features a 9.7-inch LCD screen with backlight, a silicone keyboard and two transducer connectors. It utilizes multi-frequency transducers for various applications and includes measurement software for different specialties. With digital beam-forming technology, it offers real-time and frozen zooming, automated diagnostic reports, and optional needle biopsy guidance. External interfaces like USB and RS232 are available, and it can operate for around 2 hours continuously with an optional lithium battery.



## X-RAY

---

### X-RAY, DIGITAL

Item Code : 7726993

XFM is a ITALRAY Digital X-Ray mobile unit designed to perform radiologic examinations and diagnostic investigations both in the department (Operating room, Sports Medicine, Emergency Department, Paediatrics, Orthopaedics) and in the ward.



### X-RAY CORSIX-R ANALOG

Item Code : 7735400

CORSIX is a mobile x-ray unit with new design and advanced technology, made to perform radiologic examinations and diagnostic investigations both in the department (Operating room, Sports Medicine, Plaster Room, Emergency Department, Paediatrics, Orthopaedics) and in the ward.



## OTHER

---

### INFANT INCUBATOR YP100

Item Code : 7165528

The infant incubator is equipped with a variety of advanced features tailored to provide optimal care for newborns. One notable feature is the segmented display system. The device provides separate visual readouts for set temperature, air temperature, and baby temperature. This level of detail enables caregivers to closely monitor and regulate the thermal conditions within the incubator.

- Passive humidification
- Adjustable inclination of bassinet
- Multiple failure alarm indications



### ANAESTHESIA MACHINE BOARAY 600D

Incl. CO<sub>2</sub>-Unit

Item Code : 7300001

Boaray 600D/C is equipped with complete configurations including O<sub>2</sub>/N<sub>2</sub>O\ Air supply, two vaporizer positions, ACGO, AG, CO<sub>2</sub> monitoring, auxiliary oxygen flowmeter, AGSS, etc. In addition other choices of accessories and functions provide maximum flexibility to different customers.







Chapter 8

---

# FURNITURE

OPERATING ROOM  
HOSPITAL WARD  
STRETCHER  
EXAMINATION ROOM



## OPERATING ROOM

---

### OPERATING TABLE

Item Code : 7108505

This universal operating table is designed to use in general surgery, emergency and for an auxiliary table. The table top consists of four sections, head, back, seat and leg section and is equipped with two slide rolls. The base, gear box and table top are covered with ABS synthetic resin which may resist corrosion, knocking and scratches. It is durable and easily cleansable. Slightly step on the foot pedal of action to move up and down the table to suitable position convenient for operation.

- Length of the four sections: 190 cm
- Adjustable height: 75 up to 100 cm
- Lateral tilt left/right: 20°



## HOSPITAL WARD

---

### HOSPITAL BED

Item Code : 7730706

The medical bed integrates a comprehensive array of features, from safety-enhancing elements like foldable side rails to thoughtful design touches such as removable mattress platforms and specialized attachment points. These features collectively embody a commitment to patient well-being, caregiver ease and efficient healthcare practices.



- Removable mattress platform for easy sterilization
- H/F boards locks
- Protective corner bumpers
- Lifting pole and infusion stand holes
- Drainage hooks
- 4x castors with individual brakes
- Mattress platform (L x W x H): 1960 x 900 x 10 mm
- Maximum backrest angle:  $\geq 70^\circ$
- Maximum thigh rest:  $\geq 25^\circ$

## INTENSIVE CARE BED

Item Code : 7317325

The intensive care bed is designed with meticulous attention to detail and adherence to safety standards. All openings and gaps are constructed to meet the rigorous requirements of the CE60601-2-52:2009 standard, ensuring a secure environment for patients.

The bed incorporates an imported motor that operates seamlessly and quietly. Safety remains paramount, reflected in the design of the side rails. A combination of a long and short rail ensures patient security. These rails automatically lock upon elevation and can each support a substantial weight of over 50 kg.

Further enhancing functionality, the bed includes detachable headboards and footboards, complete with integrated handles or cranks for effortless maneuvering.

- 4-section with base, head, back and leg
- Adjustable height: 47 - 79 cm
- Dimension (W x L): 106 x 222 cm
- Weight capacity: 210 kg



## INFUSION STAND

Item Code : 5800282

The IV stand is chrome plated and part of the basic equipment of every practice. The lightfast, high-quality plastic parts and the robust workmanship of the tubes are the basis for this high-quality, reliable companion. This IV stand has a practical drip tray and can be locked at the desired height in no time at all using the screw height adjustment.

- Adjustable height: 135 - 215 cm



## STRETCHER

### STRETCHER SCOOP

Item Code : 7131757

Constructed from lightweight aluminum, this stretcher offers a balance of portability and durability. With three restraints integrated, it ensures secure patient immobilization during transportation.

The stretcher features a surface designed for easy cleaning, resistant to spills and stains. Its foldable structure enhances its practicality, enabling compact storage and convenient portability.

- Dimensions (L x W x H): 213 x 56 x 15 cm



### STRETCHER N 1 X FOLDABLE

Item Code : 7313925

The stretcher N has 4 sliding feet and retractable carrying handles. Patient safety belts with quick-release fasteners are also included in the delivery. The stretcher cover is made of coated man-made fibre fabric, which is easy to clean and disinfect. There is a head cushion pocket in the cover.

- Dimensions (L x W x H): 230 x 55.6 x 13.7 cm
- Folded: 192 x 15 x 14.5 cm



### NOVOLINE 4 STANDING CUPBOARD

Item Code : 7062880

The storage first-aid for stretcher is made of sheet steel and comes in a clear, practical design. It's electrostatically powder-coated matt white. Marking by screen printing and colour pictograms. Anti-tilt device for stretchers and first aid kit holder.

- Dimensions (L x W x H): 200 x 30 x 30 cm



## EXAMINATION ROOM

### VARIMED® EXAMINATION COUCH

Item Code : 5525375

This examination couch convinces professionals not only by its clear design but also by its superior functionality. An optional paper roll holder at the lateral end is available as an accessory and proves to be very useful.

- Made in Germany
- Long-lasting upholstery with leatherette cover
- Rectangular steele tube frame powder coated RAL 9002 white grey
- Foam rubber upholstery, 5 cm thick, black
- Comfort two-piece head section adjustable up to + 40°
- Collapsible levelling feet
- Safe working load: 225 kg
- Dimensions (L x W x H): 195 x 65 x 68 cm



### VARIMED® PAPER ROLL HOLDER

Up to 50 cm

Item Code : 5530009



### MEDI-NET MULTI PURPOSE TABLE

Item Code : 5525395

The medi-net equipment table with drawer is versatile also for mobile use. It features one drawer and one additional lower platform for storage.

- Made in Germany
- Frame made of square tube, dismantlable, grey white RAL 9002
- 4 double castors Ø 75 mm
- Dimensions (L x W x H): 750 x 580 x 450 mm









Chapter 9

# RELIEF ITEMS



## INFLATABLE TENT

Item Code: 7757342

- Size (L x W x H): 12 x 6 x 3,5m
- Air pump
- Repair kit
- Set of ropes
- Set of anchorpoints
- Set of sandbags
- Groundsheet
- 4x Led strips



Customized airtight inflatable medical tent, portable, easy to install, used for first aid and emergency situation



## MOBILE TOILET

Item Code: 7757353

- Size (L x W x H): 113 x 113 x 233 cm
- Weight: 75 kg
- Water Tank: 130 L
- Waste Tank: 390 L
- Exhaust pipe
- Valve
- Paper shelf
- Urinal
- Color: Blue



## FOLDABLE BED

Item Code: 7756890

- Size (L x W x H): 190 x 64 x 42 cm
- Weight: 2.6 kg
- Packaging dimensions (L x W x H): 93 x 18 x 9 cm
- Maximum load 150 kg
- Frame material: Steel
- Construction material: Polyester PVC coated



## FOAM MATTRESS

Item Code: 7757341

- Size (L x W x H): 190 x 70 x 8 cm
- Optimal pressure distribution and unique sink
- Excellent microclimate
- CFC-free foam mattress
- Standard size to match each hospital bed
- Mattress cover with flexible, waterproof, PU
- The mattress core is made of PU foam with high density sponge
- Easy to remove the cover



## BED LINEN SET

Item Code: 7757344

- 2x Bedsheet, 145 x 210 cm
- 1x pillow case, 50 x 70 cm
- Material: Polyester 50%, cotton 50%
- Color: White



## SLEEPING BAG, WITH HOOD

Item Code: 7757349

- Size (L x W): 210 x 85 cm
- Material shell: Polyester
- Insulation: Hollow fiber
- Shape: S quilting, Two-way zipper, one person envelope model sleeping bag









Chapter 10

---

# PPE

DISINFECTION  
GOWNS  
OVERALLS  
HOOD  
GOGGLES  
FACESHIELDS  
MASKS  
GLOVES  
SHOES  
INFUSION  
OTHERS  
FURNITURE  
KITS

## CLEANSING

---

### BAKTOLIN® PURE

500 mL

Item Code : 7072709

### DOSING PUMP

500 mL

Item Code : 7330152



- Cleans thoroughly and can even be used as a body wash
- With skin-mild surfactants
- Soap-, alkali-, dye- and perfume-free
- Very well tolerated by the skin
- Supports and maintains the natural acid mantle of the skin

Baktolin pure by Paul Hartmann is a universal washing lotion that can be used for hand and body cleansing. The washing lotion is soap, alkali and fragrance-free and is also suitable for sensitive skin types. Baktolin pure is pH-neutral and contains skin-mild surfactants, so the natural acid mantle of the skin is not damaged. All products of the Hartmann hand hygiene system are compatible with each other, including various hand disinfectants, wash and care lotions. Baktolin pure can be used in various areas, from hand cleansing in the doctor's office to body washing in the hospital.

## HAND DISINFECTION

---

### SOFTA-MAN® 100 mL

Item Code: 5025022

500 mL

Item Code: 5529034

1,000 mL

Item Code: 5950040



- Ready-to-use
- Ideally suited for sensitive skin, due to panthenol and bisabolol
- Fragranced, free of dyes and low in allergens
- Dermatologically tested
- DGHM-/VAH- and RKI-listed
- Bacteria (incl. TbB and MRSA)
- Fungicidal
- Limited virucidal (incl. HBV, HCV, HIV)
- Herpes simplex
- Effective against adeno-, rota-, vaccinia, avian influenza A and noroviruses

### DOSING PUMP

500 mL

Item Code: 5950016

1,000 mL

Item Code: 5950017



Softa-Man® hand disinfection by B.Braun is ideal for dry skin, as it is particularly pleasant for sensitive users due to the high-quality care substances and the absence of dyes. Softa-Man® shows a safe immediate and long-term effect and offers a broad spectrum of efficacy. The ready-to-use alcoholic solution is suitable for hygienic and surgical hand disinfection.

## STERILLIUM®

100 mL

Item Code: 5950068

500 mL

Item Code: 5950064

1,000 mL

Item Code: 5950065

5,000 mL

Item Code: 5950066



- Ready-to-use
- Gentle on the skin and moisturising, also for dry skin types, increases skin hydration
- Rapid efficiency and excellent immediate effect
- For hygienic and surgical hand disinfection
- VAH-, IHO-, RKI-listed
- Bactericidal, levurocidal, tuberculocidal, mycobactericidal
- Limited virucidal, effective against adeno-, rota- and polyomaviruses

## DOSING PUMP

500 mL

Item Code: 7007422

1,000 mL

Item Code: 7095628



Sterillium® from Bode is a ready-to-use alcohol-based hand disinfectant that has very good skin compatibility and a very broad spectrum of efficacy. Thanks to the caring and refatting ingredients, the hand disinfectant is also suitable for long-term use by users with dry skin and it even increases skin moisture.

Sterillium® has been established on the market for over 50 years and is very popular for use in doctors' surgeries, hospitals and also in care services. The Sterillium® pump attachment guarantees delivery of the ideal dosage.

## STERILLIUM® VIRUGARD

100 mL

Item Code: 7064823

500 mL

Item Code: 7070544

1,000 mL

Item Code: 7062171



- RKI listed
- For application in all risk areas
- RKI recommendation against noroviruses
- Active ingredients: Ethanol (99%) 95.0 g
- Spectrum of activity: bactericide, fungicidal, tuberculocidal, limited virucidal (including HBV, HIV, HCV), virucidal.
- Effective against herpes simplex, adeno-, polyoma, polio and rotavirus

## DOSING PUMP

500 mL

Item Code: 7007422

1,000 mL

Item Code: 7095628



## GOWNS

---

### PROTECTIVE GOWN LEVEL 3

Size M

Item Code: 7720405

Size L

Item Code: 7720406

Size XL

Item Code: 7720407

Size XXL

Item Code: 7720408

Size XXXL

Item Code: 7720410



## OVERALLS

---

### COVERSTAR® OVERALL

CATEGORY III, TYPE 5B + 6B

Size M

Item Code: 7100451

Size L

Item Code: 7100450

Size XL

Item Code: 7100452



### COVERTEX® OVERALL

CATEGORY III, TYPE 5 + 6

Size M

Item Code: 7092127

Size L

Item Code: 7102781

Size XL

Item Code: 7330229

Size XXL

Item Code: 7092126



## HOOD

---

### COVERSTAR® HOOD

CATEGORY I

Item Code: 7768064



## GOGGLE

### 3M™ SAFETY GOGGLE, TRANSPARENT

Item Code: 7773377



## FACE SHIELDS

### DISPOSABLE PLASTIC FACE SHIELD

Item Code: 7201344



## MASKS

### WESTMED® FFP2 RESPIRATOR

#### Headband, 20 pcs

Item Code: 5810219

- PSA CATIII
- EN 149:2001 + A1:2009
- Without exhalation valve
- Folded



#### Ear-loop, 30 pcs

Item Code: 5810220

- PSA CATIII
- EN 149:2001 + A1:2009
- Without exhalation valve
- Folded
- Additional clip



### FOLIODRESS® SURGICAL MASK, 10 pcs

Item Code: 5810218



## GLOVES

---

### WESTMED®EXAMINATION GLOVES

Nitrile, powderfree, blue, 100 pcs

#### Size S

Item Code: 5810227

#### Size M

Item Code: 5810228

#### Size L

Item Code: 5810229

#### Size XL

Item Code: 5810230



### WESTMED®EXAMINATION GLOVES

Latex, powderfree, white, 100 pcs

#### Size S

Item Code: 5810231

#### Size M

Item Code: 5810232

#### Size L

Item Code: 5810233

#### Size XL

Item Code: 5810234



### WESTMED® NITRILGUARD EXAMINATION GLOVES

long, 100 pcs

#### Size S

Item Code: 5810235

#### Size M

Item Code: 5810236

#### Size L

Item Code: 5810237

#### Size XL

Item Code: 5810238



## SHOES

---

PE OVERSHOES, blue, 10 pcs

Item Code: 5011520



## INFUSION

### INFUSION SET

Single use, sterile each

Item Code: 7185555



Contains:

- Cannula 21 G x 1 1/2
- Luer connector
- Transparent tube 150 cm
- Latex-free injection port
- Filter
- Ventilation valve
- Individually packed

### VASOFIX® SAFETY VEIN CANNULA, each

16 G, 1.70 x 50 mm, grey

Item Code: 7079459

22 G, 0.90 x 25 mm, blue

Item Code: 7063957

24 G, 0.70 x 19 mm, yellow

Item Code: 7106294



### GLUCOSE, 5 %, 500 mL

Ecoflac plus, 10 pcs

Item Code: 5405414



### RINGER LACTATE, 500 mL

Ecoflac plus, 10 pcs

Item Code: 7082596





## OTHERS

---

### BODY BAG

For children

Item Code: 7147427

For adult

Item Code: 7150127



### BIOHAZARD BAG

100 L, red, 100 pcs

Item Code: 7305685

100 L, yellow, 100 pcs

Item Code: 7305707

50 L, red, 100 pcs

Item Code: 7305708

50 L, yellow, 100 pcs

Item Code: 7305709

20 L, yellow, 100 pcs, without closure clip

Item Code: 7307199

20 L, yellow, 100 pcs, with closure clip

Item Code: 7307576



### DANGEROUS GOODS PACKAGING FOR DIAGNOSTIC SAMPLE CATEGORY B, UN3373, GBOX650

Item Code: 7126126



## FURNITURE

---

### CHOLERA BED

Item Code: 7786529

The Cholera Bed, which was specially designed for use in field hospitals in the fight against cholera and Ebola, facilitates medical care for the sick.

Body fluids can drain through the hole in the center because fluid loss is common in the disease process of cholera and Ebola. The mat is made of double-sided phthalate-free PVC coated Polyester, and has been high frequency welded which it makes very easy to disinfect, as there are no threads or seams for dirt and bacteria to collect. The mat can be cleaned with a chlorine solution.



## KITS

### PPE KIT VHF500

Item Code: P7765206

- 7x Box 623L 1200 x 800 x 870 mm with lid
- 2x Transportbox, 220 L with lid
- Content list for every box
- 20x Srub, size M and L
- 20x OP-trouser, size M and L
- 250x Hood Coverstar®
- 100x Protective overalls, size M & L, Type 5/6
- 50x Protective overalls, size XL, Type 5/6
- 68x Protective gowns, size M, level 3
- 15x Protective gowns, size L, level 3
- 68x Protective gowns, size XL, level 3
- 200x Work safety apron, PU, 90 x 130 cm, white
- 50x WESTMED® FFP2 respirator, folded, without exhalation valve, with headband
- Surgical face mask, blue, EN 14683, type II, 50 pcs
- 50x Safety goggles
- 250x Face shield
- 4x PVC/Nitrile-Boots Model: Wellington, size 39, 42, 43 and 44, pair
- 240x Gloves, heavy-duty, rubber, size L, 1 pair
- Nitril® 3000 X-Long examination gloves, Nitrile, powderfree, blue, size S, M and L, 100 pcs
- 25x Safety box sharps, 5 L
- 20x Sprayer, 1,5 L
- 8x Sprayer Tukan 1600
- 2x Foldable stretcher
- 12x Packaging for diag. Sample Category B, UN3373, G-Box
- 15x Biohazard autoclave bag, 50 L, 64 x 89 cm, red, 100 pcs
- 20x Body bag, adult, white

### PPE KIT FOR 1 PERSON AND 1 DAY IN BAG

Item Code: P7765205

- Sportbag SHIFT, with marking "PPE KIT FOR 1 PERSON" and Fleischhacker Logo, black
- CoverTex® overall, white, CE, Kat. III, Typ 5 + 6, size M + L + XL
- 10x PE-shoe cover, blue
- 5x CoverStar®Hood CKA, Kat. I
- 5x Protective goggles
- 5x WESTMED® FFP2 foldable mask without valve, headgear
- care & serve® wiroDEFEND 28 chemical protective gloves, nitrile, long, green, 1 pair  
3x size S,  
2x size M,  
2x size L and 1x size XL
- WESTMED® examination gloves, size L, nitril, powderfree, blue, 100 pcs
- Tape, PPE, white, with Fleischhacker Logo
- 100x Biohazard bags, 50 L, 64 x 89 cm, red







Chapter 11

# MEDICINE

ANAESTHETICS & PREOPERATIVE MEDICINES  
ANTIALLERGICS & MEDICINES USED IN ANAPHYLAXIS  
ANTICONVULSANTS & ANTIEPILEPTICS  
ANTIDOTES & OTHER SUBSTANCES USED IN POISONING  
ANTIEPILEPTICS  
ANTIINFECTIVES  
ANTIPARKINSONISM MEDICINES  
ANTISCHIZOPHRENIA  
CARDIOVASCULAR MEDICINES  
MEDICINES ACTING ON RESPIRATORY TRACT  
MEDICINES FOR THYROID  
MEDICINES USED IN MOOD & PSYCHOTIC DISORDERS  
CARBOHYDRATE & CALORIE SOURCE  
VITAMINS & MINERALS

## ANAESTHETICS AND PREOPERATIVE MEDICINES

---

**LIDOCAINE HYDROCHLORIDE 1% SOLUTION FOR INJECTION, 20 mL x 20 VIALS**

Item Code: 8805559

Pack of 20

## ANTIALLERGENICS AND MEDICINES USED IN ANAPHYLAXIS

---

**EPINEPHRINE (ADRENALINE) TARTRATE 1 mg/mL SOLUTION FOR INJECTION, 1 mL x10 AMPOULES**

Item Code: 8803596

Pack of 10

**PREDNISOLONE 20 mg TABLET, 1000 pcs**

Item Code : 8803467

Pack of 1000

**PREDNISOLONE 5 mg TABLET, 1000 pcs**

Item Code : 8803466

Pack of 1000

**PREDNISOLONE 5 mg TABLET, 1000 pcs**

Item Code: 8805551

Pack of 1000

## ANTICONVULSANTS AND ANTIEPILEPTICS

---

**MAGNESIUM SULFATE 500 mg/mL SOLUTION, 10 mL x 10 AMPOULES**

Item Code: 8806770

Pack of 10

## ANTIDIABETIC AGENTS

---

**GLICLAZIDE 60 mg MODIFIED-RELEASED TABLET, 100S**

Item Code: 8803355

Pack of 100

**METFORMIN HYDROCHLORIDE 500 mg TABLET, 100S**

Item Code: 8803465

Pack of 100

## ANTIDOTES & OTHER SUBSTANCES USED IN POISONING

---

**NALOXONE HYDROCHLORIDE 0.4 mg/mL, 1 mL x 10 AMPOULES**

Item Code: 8803579

Pack of 10



## ANTIEPILEPTICS

---

**PHENYTOIN 100 mg TABLET, 1000S**

Item Code: 8803482

Pack of 1000

**PHENYTOIN 50 mg/mL SOLUTION FOR INJECTION AMPOULE, 10S**

Item Code: 8803483

Pack of 10

## ANTIINFECTIVES (ANTIFUNGALS)

---

**CLOTRIMAZOLE 500 mg PESSARY (VAGINAL TABLET + APPLICATOR)**

Item Code: 8803582

Pack of 1

**MICONAZOLE NITRATE 2% CREAM, 30 g TUBE**

Item Code: 8805500

Pack of 1

**MICONAZOLE NITRATE 2% CREAM, 50 g TUBE**

Item Code: 8803595

Pack of 1

**NYSTATIN 100.000 iu/mL ORAL SUSPENSION, 30 mL BOTTLE**

Item Code: 8803513

Bottle of 30 mL

## ANTIINFECTIVES (ANTIBIOTICS)

---

**AMOXICILLIN 120 mg / 5 mL POWDER FOR ORAL SUSPENSION, 100 mL**

Item Code: 8803556

Bottle of 100 mL

**AMOXICILLIN 1 g / CLAVULANIC ACID 200 mg POWDER FOR INJECTION, 50 VIALS**

Item Code: 8803512

Pack of 50

**AMOXICILLIN 250 mg, DISPERSIBLE TABLET, 10 S x 100**

Item Code: 8803514

Pack of 1000

**AMOXICILLIN 500 mg TABLET, 10 S x 10**

Item Code: 8803518

Pack of 100

**AMOXICILLIN 500 mg / CLAVULANIC ACID 100 mg, POWDER FOR INJECTION, 50 VIALS**

Item Code: 8803521

Pack of 50

**AMOXICILLIN 500 mg / CLAVULANIC ACID 125 mg TABLET, 100 S**

Item Code: 8803503

Pack of 100

**AMOXICILLIN 875 mg / CLAVULANIC ACID 125 mg TAB, 10 S x 10**

Item Code: 8803510

Pack of 100

<b>AMOXICILLIN SODIUM 500 mg, POWDER FOR INJECTION, 50 VIALS</b> Item Code: 8803516	Pack of 50
<b>AMPICILLIN 500 mg POWDER FOR INJECTION, 50 VIALS</b> Item Code: 8803525	Pack of 50
<b>BENZATHINE BENZYL PENICILLIN 1.2 MIU ( 900 mg ) POWDER FOR INJECTION, 100 VIALS</b> Item Code: 8803507	Pack of 100
<b>CEFALEXIN 250 mg SOLID ORAL FORM, 100 S</b> Item Code: 8803590	Pack of 100
<b>CEFALEXIN 250 mg / 5 mL ORAL SUSPENSION, 100 mL</b> Item Code: 8803591	Bottle of 100 mL
<b>CEFAZOLIN 1G POWDER FOR INJECTION, 100 VIALS</b> Item Code: 8803528	Pack of 100
<b>CEFOTAXIME 250 mg POWDER FOR INJECTION, 50 VIALS</b> Item Code: 8803529	Pack of 50
<b>CEFOTAXIME 500 mg POWDER FOR INJECTION, 50 VIALS</b> Item Code: 8803520	Pack of 50
<b>CEFTRIAXONE SODIUM 1G POWDER FOR INJECTION, 10 VIALS</b> Item Code: 8803546	Pack of 10
<b>CEFTRIAXONE SODIUM 250 mg POWDER FOR INJECTION, 10 VIALS</b> Item Code: 8803509	Pack of 10
<b>CLOXACILLIN 500 mg CAPSULE, 10 S x 100</b> Item Code: 8803532	Pack of 1000
<b>CLOXACILLIN SODIUM 250 mg CAPSULE, 1000 S</b> Item Code: 8803530	Pack of 1000
<b>CLOXACILLIN SODIUM SALT 500 mg POWDER FOR INJECTION, 50 VIALS</b> Item Code: 7324617	Pack of 50
<b>DOXYCYCLINE 100 mg TABLET, 10 S X 10</b> Item Code: 8803577	Pack of 100
<b>ERYTHROMYCIN 250 mg / 5 mL POWDER FOR ORAL SUSPENSION, 100 ml</b> Item Code: 8803600	Bottle of 100 ml

**ERYTHROMYCIN STEARATE 500 mg TABLET, 100 S**

Item Code: 8803599

Pack of 100

**GENTAMICIN SULFATE 10 mg / mL AMPULE, 2 mL x 100**

Item Code: 8803491

Pack of 100

**GENTAMICIN SULFATE 40 mg / mL AMPULE, 2 mL x 100**

Item Code: 8803491

Pack of 100

**METRONIDAZOLE 200 mg / 5 mL ORAL SUSPENSION, 100 mL**

Item Code: 8803598

Bottle of 100 mL

**METRONIDAZOLE 250 mg TABLET, 10 S X 100**

Item Code: 8803559

Pack of 1000

**METRONIDAZOLE 500 mg TABLET, 100 S**

Item Code: 8803561

Pack of 100

**SULFADIAZINE SILVER 1% CREAM, 50 G x 10 TUBES**

Item Code: 8803336

Pack of 10

**SULFAMETHOXAZOLE 100 mg /TRIMETHOPRIM 20 MG DISPERSIBLE TABLET, 10 S x 100**

Item Code :8803564

Pack of 1000

**SULFAMETHOXAZOLE 400 mg /TRIMETHOPRIM 80 MG TABLET, 10 S x 100**

Item Code :8803505

Pack of 1000

**SULFAMETHOXAZOLE 800 mg /TRIMETHOPRIM 160 MG TABLET, 10 S x 100**

Item Code :8803584

Pack of 1000

**TETRACYCLINE HYDROCHLORIDE 1% EYE OINTMENT, 5G TUBE**

Item Code: 8800021

Pack of 1

## ANTIPARKINSONISM MEDICINES

---

**BIPERIDEN 2 mg TABLET, 100 S**

Item Code: 8803471

Pack of 100

## ANTISCHIZOPHRENIA

---

**RISPERIDONE 2 mg TABLET, 60 S**

Item Code: 8803484

Pack of 60

## CARDIOVASCULAR MEDICINES

---

**ACETYLSALICYLIC ACID 100 mg TABLET, 90 S**

Item Code: 8803448

Pack of 90

**AMLODIPINE BESYLATE 5 mg TABLET, 10 S x 10**

Item Code: 8803447

Pack of 100

**AMLODIPINE BESYLATE 10 mg TABLET, 10 S x 10**

Item Code: 8803423

Pack of 100

**BISOPROLOL 10 mg TABLET, 10 S x 10**

Item Code: 8803457

Pack of 100

**BISOPROLOL 5 mg TABLET, 10 S x 10**

Item Code: 8803456

Pack of 100

**BISOPROLOL 5 mg TABLET, 10 S x 10**

Item Code: 8800124

Pack of 100

**ENALAPRIL MALEATE 10 mg TABLET, 100 S**

Item Code: 8803459

Pack of 100

**ENALAPRIL MALEATE 10 mg / HYDROCHLOROTHIAZIDE 25 mg TABLET, 100 S**

Item Code: 8803460

Pack of 100

**ENALAPRIL MALEATE 5 mg TABLET, 100 S**

Item Code: 8803458

Pack of 100

**FUROSEMIDE 10 mg/mL SOLUTION, 2 mL x 10 AMPOULES**

Item Code: 8803553

Pack of 100

**FUROSEMIDE 40 mg TABLET, 100 S**

Item Code: 8803461

Pack of 100

**GLYCERYL TRINITRATE 0.5 mg SUBLINGUAL TABLET, 100 S**

Item Code: 8803462

Bottle of 100

**HYDRALAZINE HYDROCHLORIDE 20 mg POWDER FOR INJECTION, 5 VIALS**

Item Code: 8803539

Pack of 5

**HYDROCHLOROTHIAZIDE 25 mg TABLET, 10 S x 10**

Item Code: 8800126

Pack of 100

**ISOSORBIDE DINITRATE 10 mg TABLET, 100 S**

Item Code : 8805482

Pack of 100

**METHYLDOPA 250 mg TABLET, 10 S x 10**  
Item Code: 8803588 Pack of 100

**SIMVASTATIN 20 mg TABLET, 100 S**  
Item Code: 8803468 Pack of 100

**OMEPRAZOLE 20 mg CAPSULE, 100 S**  
Item Code: 8803589 Pack of 100

**ORAL REHYDRATION SALT (ORS) LOW OSMOL 20.5 G/1L POWDER, 100 SACHETS**  
Item Code: 7324597 Pack of 100

**ZINC SULFATE 20 MG DISPERSIBLE TABLET, 100 S**  
Item Code: 7324600 Pack of 100

## MEDICINES ACTING ON RESPIRATORY TRACT

---

**BECLOMETASONE DIPROPIONATE 0.25 mg/PUFF, 200 PUFF PER INHALER**  
Item Code: 8803339 Pack of 1

**BECLOMETHASONE 100 mcg /PUFF, 200 PUFF PER MDI**  
Item Code: 8803337 Pack of 1

**SALBUTAMOL SULFATE 0.1 mg /PUFF, 200 PUFF PER INHALER**  
Item Code: 8801907 Pack of 1

**SALBUTAMOL SULPHATE 100 mcg /PUFF INHALER, 1 S**  
Item Code: 8803469 Pack of 1

**IBUPROFEN 200 MG TABLET, 100 S**  
Item Code: 8803515 Pack of 100

**PARACETAMOL (ACETAMINOPHEN) 100 mg TABLET, 100 S**  
Item Code: 7324598 Pack of 100

**PARACETAMOL (ACETAMINOPHEN) 500 mg TABLET, 1000 S**  
Item Code: 8803547 Pack of 1000







## MEDICINES FOR THYROID

---

**LEVOTHYROXINE SODIUM 100 mcg TABLET, 100 S**

Item Code: 8803464

Pack of 100

## MEDICINES USED IN MOOD DISORDERS

---

**FLUOXETINE 20 mg CAPSULES, 10 S x 3**

Item Code: 8803569

Pack of 30

**SODIUM VALPROATE 200 mg GR TABLET, 100 S**

Item Code: 8807934

Pack of 100

**SODIUM VALPROATE 400 mg / 4 mL SOLUTION FOR INJECTION/INFUSION, 5 S**

Item Code: 8808231

Pack of 1

**VALPROIC ACID (SODIUM VALPROATE) 500 mg PROLONG-RELEASED TABLET, 60 S**

Item Code: 8803485

Pack of 60

## MEDICINES USED IN MOOD DISORDERS - PAIN AND PALLIATIVE CARE

---

**AMITRIPTYLINE 25 mg TABLET, 100 S**

Item Code: 8803470

Pack of 1000

## MEDICINES USED IN MOOD DISORDERS ANTICONVULANTS AND ANTIEPILEPTIC

---

**CARBAMAZEPINE 200 mg SCORED TABLET, 10 S x 10**

Item Code: 8803472

Pack of 100

## MEDICINES USED IN PSYCHOTIC DISORDERS

---

**CHLORPROMAZINE 100 mg TABLET, 100 S**

Item Code: 8803473

Pack of 100

**CHLORPROMAZINE 25 mg/mL SOLUTION FOR INJECTION AMPOULE, 10 S**

Item Code: 8803474

Pack of 10

**CLOZAPINE 100 mg TABLET, 30 S**

Item Code: 8803475

Pack of 30

**CLOZAPINE 25 mg TABLET, 30 S**

Item Code: 8803476

Pack of 30

**FLUPHENAZINE HCL 5 mg TABLET, 100 S**

Item Code: 8803479

Pack of 100

**HALOPERIDOL 5 mg TABLET, 1000 S**

Item Code: 8803570

Pack of 1000

**HALOPERIDOL 5 mg TABLET, 100 S**

Item Code: 8803480

Pack of 100

**HALOPERIDOL 5 mg/mL SOLUTION FOR INJECTION, 1 mL x 10 AMPOULES**

Item Code: 8803481

Pack of 10

## SOLUTIONS FOR CARBOHYDRATE AND CALORIE SOURCE

---

**DEXTROSE (GLUCOSE) 5% SOLUTION, 500 mL PLASTIC POUCH + IV GIVING SET**

Item Code: 8806770

Pouch of 500 mL

## VITAMINS AND MINERALS

---

**ASCORBIC ACID (VITAMIN C) 250 mg TABLET, 100 pcs**

Item Code: 8805891

Jar of 100

**FERROUS SULPHATE 200 mg + FOLIC ACID 0.4 mg TABLET, 100 pcs**

Item Code: 8807644

Pack of 100

**FOLIC ACID 5 mg TABLET, 10 x 100 pcs**

Item Code: 8803586

Pack of 1000





Mobile Medical Unit

WESTMED

WESTMED

MAN

Mobile  
Medical Unit

WestMed, achieved by  
Fürstentum Liechtenstein AG  
in der Schaaner Str.  
1000 Schaan  
Germany  
Phone: +423 724 9333  
E-Mail: info@westmed.ch







Chapter 12

# MOBILE SOLUTIONS

VEHICLE DETAILS  
AMBULANCE  
MOBILE LAB  
MOBILE MEDICAL UNIT  
MOBILE CLINIC

## VEHICLE DETAILS

---

### MERCEDES BENZ SPRINTER 319CDI

We usually use Sprinter 319CDI of the latest generation with the following features:

- Air conditioning
- 3 Front seats
- Digital entertainment system
- Assistance systems



In addition, the following things are standard in the work area:

- Extra insulation
- 2nd battery with charging function
- Rear view camera
- Voltage protection and fuse box
- Extra heating
- Air-conditioning and extremely high quality interior





## AMBULANCE

The ambulances are equipped with the latest medical devices and equipment. We have selected robust, high-quality manufacturers with whom we have been working for many years, especially for everyday items such as stretcher, emergency bags and ECG.

The basis of these vehicles is a newest generation Mercedes Benz Sprinter CDI. The vehicles can also individualize as per customers request.



### MEDICAL EQUIPMENT

- Air splint set
- Cervical collars set
- Spineboard
- Birth kit
- Burn set
- Portable suction pump
- Defibrillator
- Transport ventilator
- Reanimation unit
- Fixed sphygmomanometer
- Portable sphygmomanometer
- 2x stethoscopes
- Glucometer
- Pulseoximeter
- Traction splint set

### MEDICAL BAGS

- Basic medical equipment bag

### STRETCHERS GROUP

- Main stretcher & stretcher platform
- Main stretcher lock system
- Combination stretcher
- Vacuum stretcher
- Scoop stretcher

### OXYGEN & VACUUM SYSTEM

- Oxygen hose + records
- 2x Oxygen cylinder, 10 L
- Oxygen outlet
- 2x Oxygen regulator
- Oxygen flowmeter
- Suction outlet

### PORTABLE OXYGEN UNIT

- Oxygen cylinder 2 L
- Oxygen regulator

### INTERIOR FINISHES

- Partition cover
- Partition glass
- Door inner cover
- Inside cabin mounting brackets

### INTERIOR

- Left side cabinets / cover - ABS
- Right side cabinets / cover - ABS
- Ceiling - ABS



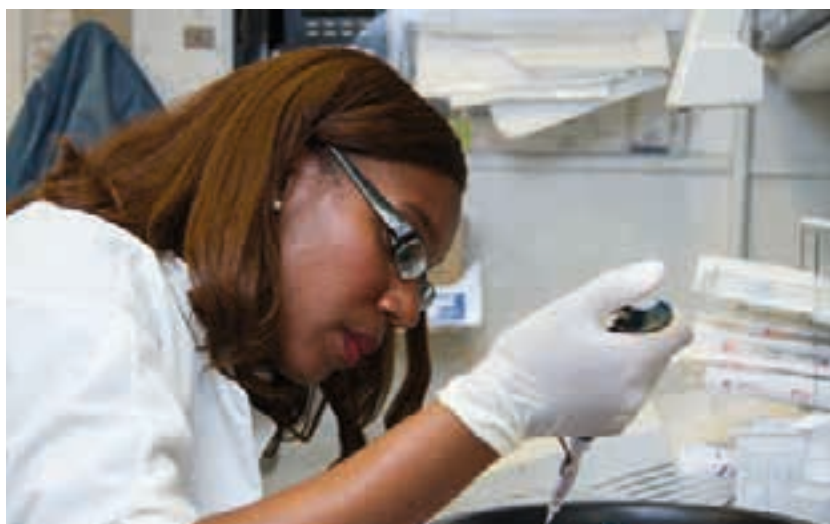
## MOBILE LAB

---

The mobile laboratory is also installed in a Mercedes Benz Sprinter CDI of the latest generation.

It enables all standard laboratory tests and examinations to be carried out anywhere in the world. Even in countries with limited infrastructure, the system enables tests with results available within minutes.

The module covers all common urine and blood tests and is equipped with the necessary material. In addition, all standard spare parts and accessories are included to enable at least 200 procedures. The vehicle is also equipped with clothing and PPE for employees.



### Scope of supply:

- Precision balance max. 620 g: d=0,001 g
- Genrui Semi-auto Chemistry Analyzer
- cobas® h 232 point-of-care-system for cardiac analysis
- Blood glucose meter, Medisign MM1000, for measurement in mg/dl
- LC-8 3500 Centrifuge, with 8 x 15 mL rotor, max. speed 3500 rpm, 230V
- Table-top refrigerator
- Pipette, digital, 2-20 ul
- Variable volume pipette in the sizes 0.5-10 µl, 5-50µl,10-100 µl, 20-200µl and 100-1000 µl
- Transferpette S-12, type Digital, 5 - 50 µl, IVD, KB, with accessories
- Pipette rack round rotating Varitips pipettes (30 pipettes/Pack), bench-top racks
- 1,000x Blood collection kit
- 250x Sample collection kit, 12 mL
- 500x Sample collection kit, standard
- ACCUMAX Universal Grad Tip Blue, 100-1000µl, Pack of 6 Racks á 96 = 576 pcs
- Transferpette Alpha Volume 100-1000 µL, 1-channel
- 5.000x disposable syringe, 0.5 mL, with cannula 23 G
- 50x SARS-CoV-2 Rapid Antigen Test Kit, Box of 5 pcs
- Contactless infrared forehead thermometer
- 2x Wall dispenser systems for disinfection and cleaning
- 5x Softa-Man® Hand disinfection, 500 mL
- 2x Softa-Skin® Hand cleaning, 500 mL
- 5x Bacillol® Tissues Disinfectant wipes, Dispenser, 100 pieces
- Set of surgical clothes incl. scrubs, pants, T-shirt, socks and OP-Clogs, 2x size S, 2x size M, 5x size L and 2x size XL
- 50x PPE Emergency Kit for 10 days - Size L
- 200x Gowns, L3
- 100x FFP2 respirator, without valve
- Surgical face masks, box of 50
- 200x Sustainable mask, cotton
- Trio glove dispenser
- Examination gloves, latex, lightly powdered, 100 pcs, 5x size S, 10x size M and L





## MOBILE MEDICAL UNIT

The mobile medical unit is ready for immediate use and includes the following modules:



EXAMINATION



LABORATORY



X-RAY



MINOR SURGERY



PHARMACY

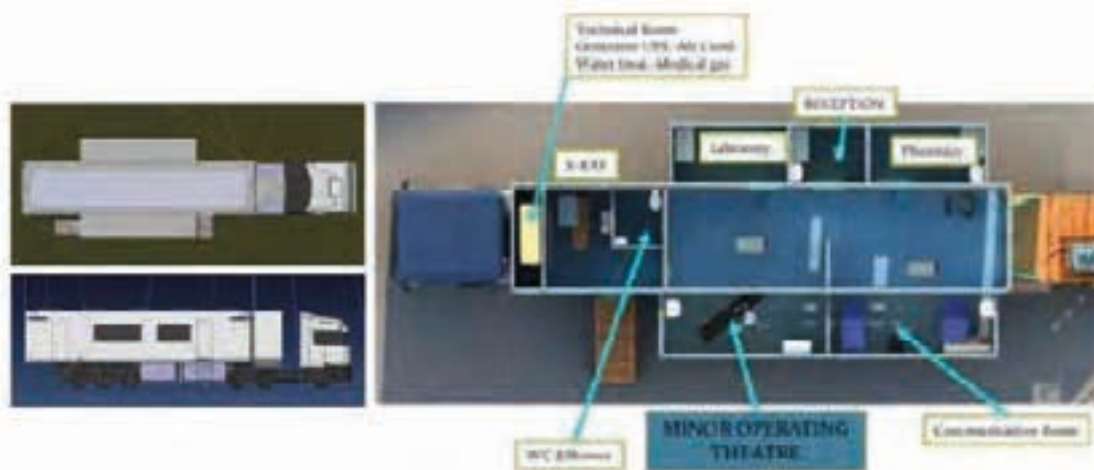


The modules can be customized as desired and the following options are presently available:

### DENTAL, MATERNITY, CARDIOLOGY

Further options are being developed.

The modules have been in use for decades in the proven configurations and can be adapted accordingly. They are regularly reviewed by users to ensure correct configuration and adherence to the latest technical standards. We use only user-friendly equipment and high quality interiors and furniture. As tractor-unit we use the Mercedes Benz Actros, the trailers are all made in Germany according to the highest quality standards.



# MOBILE CLINIC

The Hospital trailer consist of following rooms:



EXAMINATION ROOM



LABORATORY



X-RAY



OPERATING ROOM



The standard facilities include a reception, a technical room and a shower room with WC.







## EXAMINATION ROOM

### Scope of supply:

- Examination couch, hydraulic, 3 parted top
- Examination couch, standard
- 2x Footsteps for examination couch
- 2x Examination lamp, on wheels, with battery backup
- 2x Instrument table (mayo stand)
- Drug dispensary trolley
- 2x Screen, 3 parts, on wheels
- Visual chart light box with chart
- 2x Stool, adjustable with backrest
- Scales
- 2x Garbage can, steel, with foot operated lid
- Color chart am Ishihara
- Ophthalmoscope / otoscope set
- 2x Sphygmomanometer, aneroid with 3 different cuffs
- Staff clothes, blue, 1x size S, 3x size M and 1x size L





## LABORATORY

### Scope of supply:

- Autoclave, one step, 10-15 L, with baskets
- Biochemical analyser, dry chemistry
- Centrifuge, for blood separation and haematocrit
- Centrifuge for urine
- Cradle for keeping tubes of blood in motion
- Haematology analyzer
- Haemoglobinometre, electronic
- Incubator, dry room temperature 37°C
- Heat sealer for sterilizing bags
- Urine chemistry reader, electronic, dry chemistry
- Blood gas analyzer (hospital only)
- Glucometre, electronic, using dry chemistry technique
- 2x Microscope, binocular, halogen, 4x, 10X, 40X, 100X object
- Laminair work bench
- Examination couch, standard
- Examination lamp, on wheels, with battery backup
- Pipettes, set of 3, for 25µl, 50µl and 100µl
- Dishwasher, normal commercial (for equipment)
- Freezer, normal commercial
- Refrigerator, commercial
- 2x Garbage can, steel, with foot operated lid
- Staff clothes blue, 3x size S, 5x size M and 2x size L





Scope of supply:

- X-ray machine
- X-ray table
- 2x X-ray View box
- 2x X-ray, Protective Equipment
- Ultrasound Unit
- 2x Garbage can, steel, with foot operated lid
- Staff clothes, blue, 1x size S, 3x size M and 1x size L





## OPERATING ROOM

### Scope of supply:

- Anaesthesia machine
- OT, Diathermy / Cautery machine
- 2x Infusion pump, portable
- OT, Operating table, complete with accessories
- 2x Footsteps for examination couch
- 2x Stool, adjustable with backrest
- Defibrillator, hospital, stationary
- OT, Lamps for shadowless light, battery backup
- OT, Suction pump for body fluids
- Crash Cart / Resuscitation trolley
- Resuscitator bag with masks and oral tubes
- Intubation set / Laryngoscope
- Orthopedic traction set
- 2x IV stand / Perfusion stand
- 4x Instrument table
- 3x Garbage can, steel, with foot operated lid
- Surgical gowns, dark green, 25x size S, 50x size M and 25x size L
- Staff clothes, blue, 12x size S, 25x size M and 13x size L





## HEALTHCARE CONTAINERS



Using standard shipping containers for converted health cabins has several benefits, including portability, modular design, and cost-effectiveness. These containers are commonly used in global shipping, making it easy to transport and quickly assemble health cabins of various sizes. Their modular structure allows for customization to meet specific needs while reducing production costs, making them an economical option for healthcare organizations. Converted health cabins can extend healthcare services to broader populations due to their quick installation, customization capabilities, and cost advantages.



### STANDARDIZATION

Conforms to ISO standards, ensuring ease of use and compatibility across different transport systems.

### MATERIAL

Primary material: Steel, known for its durability and resistance to corrosion, ensuring a long service life.

### MODULAR DESIGN

Modular structure allows for stacking and combining, providing convenience for storage and transport.

### TRANSPORT

Suitable for sea, land and rail transport, making it widely used in global trade.

### VOLUME

Large volume suitable for transporting a variety of products and materials, with a spacious interior for organised loading.

### INTERNATIONAL TRADE

Widely preferred in international trade as a standard unit of transport used worldwide.

The container clinics can be customised and equipped to meet your specific needs.



FIRST AID CLINIC



GYNECOLOGY CLINIC



NURSE STATION



LOW / HIGH DEPENDENCY UNIT



DENTAL CLINIC



TECHNICAL UNIT



LABORATORY UNIT



PHARMACY UNIT



KITCHEN



X-RAY UNIT



COLD STORAGE UNIT



OXYGEN UNIT



## HIGHLIGHTED FEATURES



### PORTABILITY

Container healthcare clinics provides a mobile solution that is easy to transport and quick to set up, which is particularly useful in emergencies, disaster relief or remote areas. They also serve as temporary healthcare facilities during hospital renovations and ensure continuous access to healthcare services for patients.

## SPECIFICATIONS

### WALL INSULATION

After internal insulation, the walls are covered with panels with antibacterial properties, either with PVC or aluminum surfaces.

### FLOOR COATING

2 mm thick PVC vinyl is used on 14 mm thick board or epoxy coating.

### EXTERNAL/ INTERNAL DOOR

The internal and external doors of the container can be made of PVC, aluminum or metal.

### DURABILITY AND SUSTAINABILITY

The clinics are made from steel shipping containers that can withstand extreme weather conditions, earthquakes and difficult terrain, ensuring their longevity and continuity. In addition, the use of recycled materials demonstrates our commitment to sustainability and enables the production of high quality, environmentally friendly clinics.

### EFFICIENT SPACE UTILISATION

The floor plan maximises space and provides an efficient working environment. Sturdy walls support all medical equipment and storage cabinets. Wall mounting facilitates cleaning and organisation.

### ADVANCED HYGIENE CONTROL

The floors are made of hygienic and easy-to-clean materials that meet clinical standards. The robust walls are also easy to clean. Power sockets ensure a safe power supply and cabinets allow materials to be stored in an organized manner. The design promotes efficient clinic operations, patient safety and the comfort of medical staff.

### WINDOWS

The windows can be made of PVC, aluminium and metal materials. They can be single or double hung and can open up to 90 degrees. Double glazing is possible.

### ELECTRIC INSTALLATIONS

A moisture-proof luminaire is used.  
Socket - 12V inverter (optional) - Duplex 220V socket (optional)

For further information please contact us.

## EXAMPLE: FIRST AID CLINIC



### DIMENSIONS

#### EXTERIOR DIMENSIONS / AREA (L x W x H)

6,058 × 2,438 × 2,591 mm / 20' x 8' x 8' 6" / 13.93 m<sup>2</sup>

#### INTERIOR DIMENSIONS / AREA (L x W x H)

5,898 × 2,340 × 2,390 mm / 20' x 8' x 8' 6" / 28.33 m<sup>2</sup>

#### DOOR DIMENSIONS (W x H)

2.34 m x 2.28 m / 7 ft 9 in x 7 ft 6 in

#### VOLUME

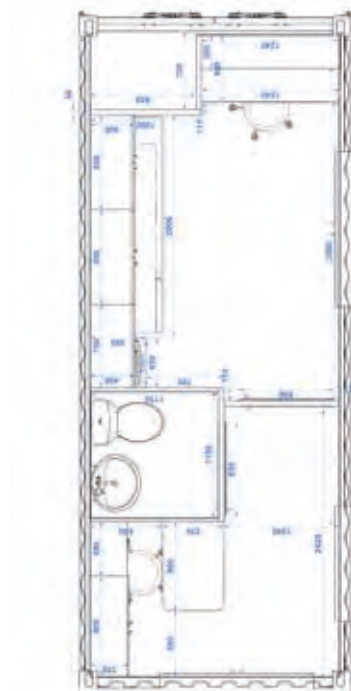
33.2 cubic meters / 1,172 cubic feet

#### WEIGHT

5,070 lbs. (2300 kg) tare weight

55,126.9 lbs. (25,000 kg) maximum payload weight (max cargo weight)

60,197 lbs. (27,305 kg) maximum gross weight





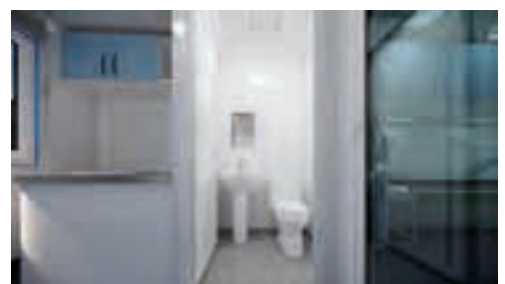
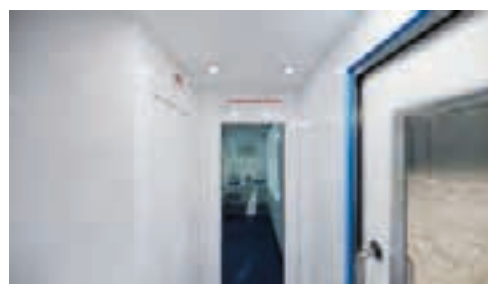
## INTERIOR DESIGN



The examination room is designed for the most effective and efficient use by healthcare staff. The sink area adjacent to the examination bed is positioned for convenient use by both staff and patient. The Plexiglas divider next to the sink is designed to separate the sink from the patient bed. The cupboard under the sink and the three double-door cupboards in the upper section provide a suitable arrangement for storing and organising the staff's needs in the examination room.

The examination table is illuminated by LED lighting located under the cupboards. A simple step ladder is located under the standard-sized examination table for patient comfort. An otoscope-ophthalmoscope-blood pressure monitor kit can also be wall-mounted above the examination table if required. There are three 220V sockets in the room.

There is a doctor's desk and stool at the entrance to the examination room. There is a medicine cabinet on top of the desk. Optionally, an air conditioner can be mounted on top of this section.



You can visit the this container by scanning the QR code.



The operator area, located in the entrance area, is where patient records are maintained. Depending on the client's requirements, a waiting area can also be included in this section. A toilet has been incorporated into this area for the convenience of staff and patients. In addition, a double-hung PVC window is installed in this area, and a blind system can be added to these windows if required. In accordance with safety standards, an exit sign indicating the way out can be mounted on the ceiling in this area. Signs and information panels can also be installed inside the room. The electrical panel and system equipment, where the electrical system is collected and controlled, is located in the cabinet behind the control panel. Depending on the site conditions and the height of the entrance door from the ground, an optional exit stair can be added. Advertising panels, logos or emblems can be added to the outside of the container to order.

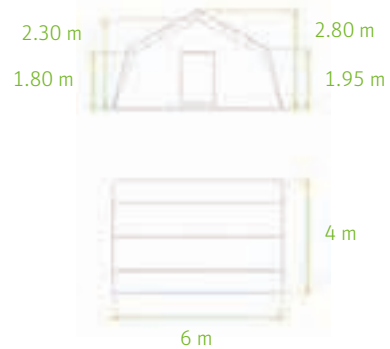
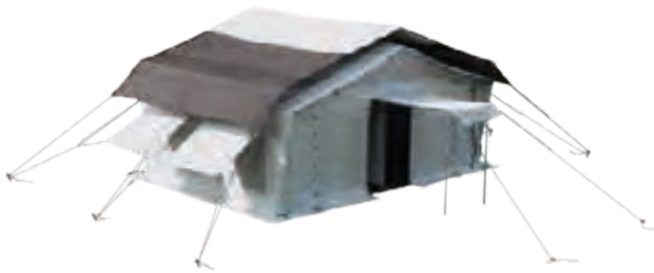


# VACCINATION MODULE

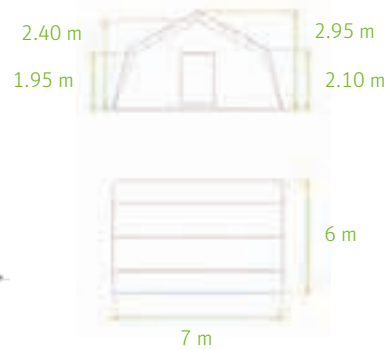
## HUGGY MULTIPURPOSE TENTS

The Huggy tents are designed to withstand various environmental challenges with their waterproof, rotproof, and UV-stabilized features, ensuring durability across all climate zones. Additionally, they are fire retardant for added safety. The lightweight, rectangular, and framed tents serves versatile purposes, from serving as a space for schooling to providing storage or temporary shelter. Their outer tent fabric, constructed from 450 - 455 g/m<sup>2</sup> PVC coated fabric in natural white, offers both resilience and reliability in diverse conditions.

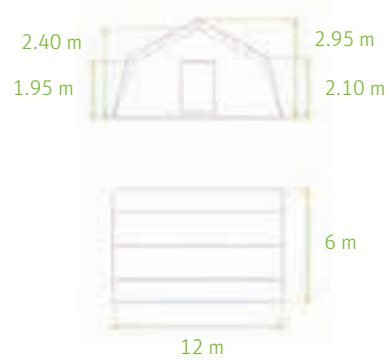
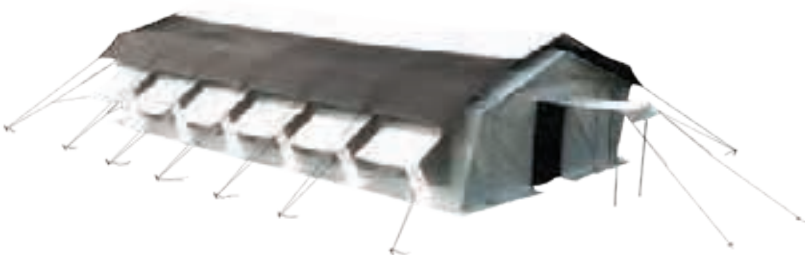
**HuggyTM 24 tent**  
7738933



**HuggyTM 48 tent**  
7738934



**HuggyTM 72 tent**  
7738935



## TENT 1 - REGISTRATION



**Huggy™ 24 tent**  
Item Code: 7738933

**Disinfectant dispenser 10x Sterilium**  
Item Code: 7736052



**2x Protective Shield**  
Item Code: 7738894



**2x Screen folding**  
Item Code: 7737828



**20x Surgical gown**  
Item Code: 7720407



**20x Face shield**  
Item Code: 7201 344



**Clinical Thermometer**  
Item Code: 7187176



**Waste collector**  
Item Code: 7039877



**Trash bag, 100 pcs**  
Item Code: 73057008





## TENT 2 - DOCTOR CONVERSATION



**HuggyTM 48 tent**  
7738934

**Disinfectant dispenser 10x Sterilium**  
Item Code: 7736052



**2x Protective Shield**  
Item Code: 7738894



**2x Screen folding**  
Item Code: 7737828



**20x Surgical gown**  
Item Code: 7720407



**20x Face shield**  
Item Code: 7201344



**Nitrile gloves, size M**  
Item Code: 5810228



**Nitrile gloves, size L**  
Item Code: 5810229



**Nitrile gloves, size XL**  
Item Code: 5810230



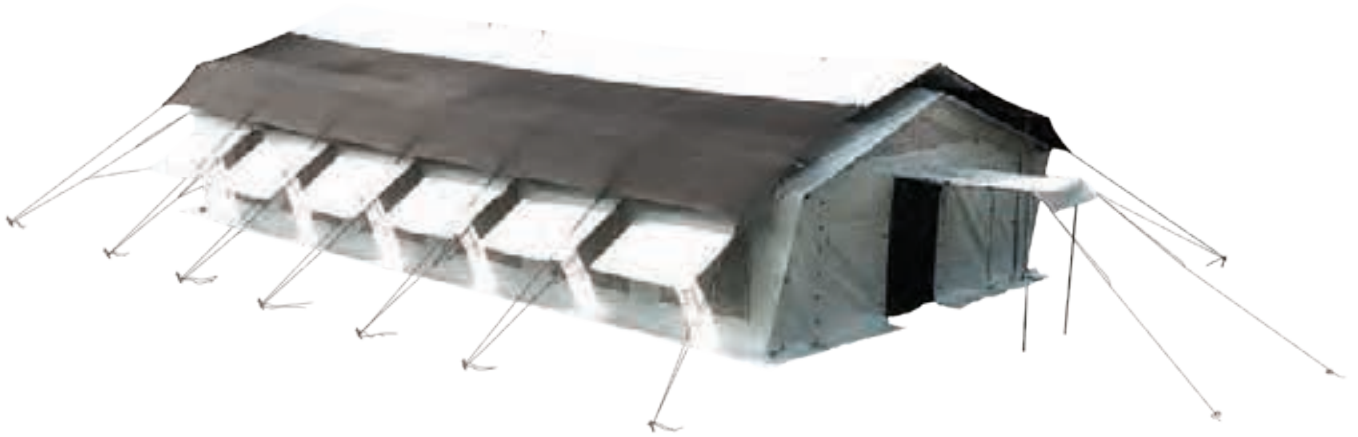
**Waste collector**  
Item Code: 7039877



**Trash bag, 100 pcs**  
Item Code: 73057008



## TENT 3 - VACCINATION



**Huggy™ 72 tent**  
7738935

**Disinfectant dispenser 10x Sterilium**  
Item Code: 7736052



**2x Protective Shield**  
Item Code: 7738894



**2x Screen folding**  
Item Code: 7737828



**20x Surgical gown**  
Item Code: 7720407



**600x Vaccination kit**  
Item Code: 7738031



**12x Screen folding**  
Item Code: 7727828



**20x Safety container**  
Item Code: 5065574



**Waste collector**  
Item Code: 7039877



**Trash bag, 100 pcs**  
Item Code: 73057008



## TENT 4 - WAITING / SANITARY AREA



### Huggy™ 24 tent

Item Code: 7738933

### Disinfectant dispenser 10x Sterilium

Item Code: 7736052



### 2x Screen folding

Item Code: 7737828



### Nitrile gloves, size L

Item Code: 5826004



### Examination couch

Item Code: 5500750



### Infusion stand

Item Code: 5800282



### Waste collector

Item Code: 7039877



### Trash bag, 100 pcs

Item Code: 73057008



## TENT 5 - TESTING



**Huggy™ 24 tent**  
Item Code: 7738933

**Disinfectant dispenser 10x Sterilium**  
Item Code: 7736052



**2x Screen folding**  
Item Code: 7737828



**1000x SARS CoV2 Rapid test**  
Item Code: 7728823



**Examination couch**  
Item Code: 5500750



**Waste collector**  
Item Code: 7039877



**Trash bag, 100 pcs**  
Item Code: 73057008







FLEISCHHACKER

Almost all product and manufacturer names used in this catalog are registered trademarks or should be regarded as such.

The image material used generally comes from the manufacturer and has been used with their permission.

Please note that the presentation of the goods in this catalog does not constitute a legally binding offer, but rather general information.

The product illustrations are examples and may be delivered differently from the illustration.

We have taken the greatest possible care in compiling this catalog. Nevertheless, errors cannot be completely ruled out.

No legal responsibility or liability can be accepted for incorrect presentation and its consequences.

# Product SOLUTIONS

Tailored solutions for your unique needs.



Fleischhacker GmbH & Co. KG  
An der Silberkuhle 18  
D-58239 Schwerte

Tel: +49 (0) 2304 931 0  
E-Mail: [info@fleischhacker.biz](mailto:info@fleischhacker.biz)

[www.fleischhacker.biz](http://www.fleischhacker.biz)

